

**YOU ARE DOING IT WRONG**

**MICHAEL FRANKEN**





YOU ARE DOING IT **WRONG**

# Stop Pushing **Agile**

MICHAEL FRANKEN



# MISPERCEPTIONS

# MISPERCEPTIONS

**SCRUM**

# MISPERCEPTIONS

## SCRUM

- IS A **DEVELOPMENT** METHODOLOGY



# MISPERCEPTIONS

## SCRUM

- IS A **DEVELOPMENT** METHODOLOGY
- MAKES TEAMS GO **FASTER**

# MISPERCEPTIONS

## SCRUM

- IS A **DEVELOPMENT** METHODOLOGY
- MAKES TEAMS GO **FASTER**
- SAVES **COSTS**

# MISPERCEPTIONS

## SCRUM

- IS A **DEVELOPMENT** METHODOLOGY
- MAKES TEAMS GO **FASTER**
- SAVES **COSTS**
- IS ABOUT **EFFICIENCY**



# MISPERCEPTIONS

## SCRUM

- IS A **DEVELOPMENT** METHODOLOGY
- MAKES TEAMS GO **FASTER**
- SAVES **COSTS**
- IS ABOUT **EFFICIENCY**
- NEEDS TO BE **EMBEDDED** IN THE ORGANIZATION

# LET'S PLAY!

**a Game**

20#	5#	1#
16.1	18.3	18.7
14	21	25
12.5	16.8	23.5
15	17	22
82.6	38.5	30
	17.8	3.2



Google







	Flights	On-Time Performance		Load Factors				Cancelled	Diverted
Carrier	2007	2007	2006	2007	2006	2005	2004	2007	2007
WN - Southwest Airlines	1,164,906	81.72%	84.66%	72.60%	73.10%	70.70%	69.50%	0.43%	0.12%
DL -Delta Air Lines	568,862	75.65%	75.72%	80.60%	78.50%	76.50%	74.70%	1.18%	0.21%
CO - Continental Airlines	411,105	72.95%	76.54%	81.40%	80.70%	78.90%	76.90%	0.92%	0.35%
NW - Northwest Airlines	480,382	71.23%	79.02%	83.90%	84.00%	81.50%	79.20%	2.04%	0.13%
UA - United Airlines	594,488	69.90%	74.79%	82.70%	82.10%	81.50%	79.30%	2.28%	0.10%
UA - United Airlines	594,488	69.90%	74.79%	82.70%	82.10%	81.50%	79.30%	2.28%	0.10%
NW - Northwest Airlines	480,382	71.23%	79.02%	83.90%	84.00%	81.50%	79.20%	2.04%	0.13%

Copyright©2009 Poppendieck.LLC









# 100% UTILIZATION





**100% UTILIZATION  
NO FLOW**









# 70% UTILIZATION



# 70% UTILIZATION FLOW

A photograph of a multi-lane highway with traffic, including cars and trucks, under a dark overlay. The text "70% UTILIZATION FLOW" is superimposed on the image. The background shows a highway with several lanes, with cars and trucks moving away from the viewer. In the distance, there are blue overhead road signs for "Haarlem", "Schiphol", and "Amsterdam". A large blue truck with "CEFCO" on its side is prominent in the foreground. The overall scene is dimly lit, suggesting dusk or dawn.





Wierden-West 2  
Nijverdal 8  
Zwolle 43  
N35

afrit 32

Wierden  
Rijssen  
N350

U44 U45

100



A photograph of a multi-lane highway with a speed limit sign of 100 and overhead road signs. The highway is mostly empty, with a few vehicles visible in the distance. The sky is overcast with grey clouds. The text "5% UTILIZATION" is overlaid on the image in a large, bold, sans-serif font. The "5%" is white, and "UTILIZATION" is yellow.

# 5% UTILIZATION



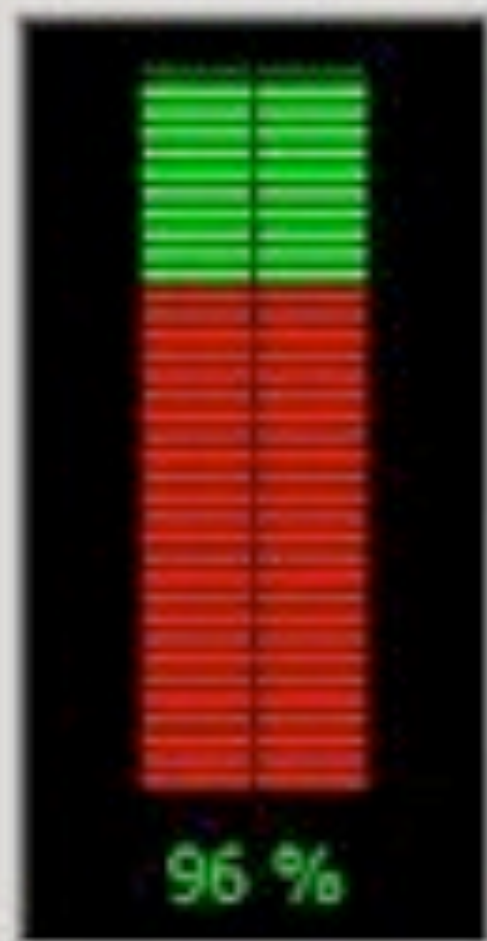
A photograph of a multi-lane highway with a speed limit sign of 100 and overhead road signs. The highway is dark asphalt with white dashed lane markings. A speed limit sign with the number 100 is visible on the right side of the road. Overhead signs are visible in the distance, including one that says 'Wier... West' and another that says 'Ni... del a'. The sky is overcast with grey clouds. The text '5% UTILIZATION FLOW' is overlaid on the image in large, bold, white and yellow letters.

# 5% UTILIZATION FLOW

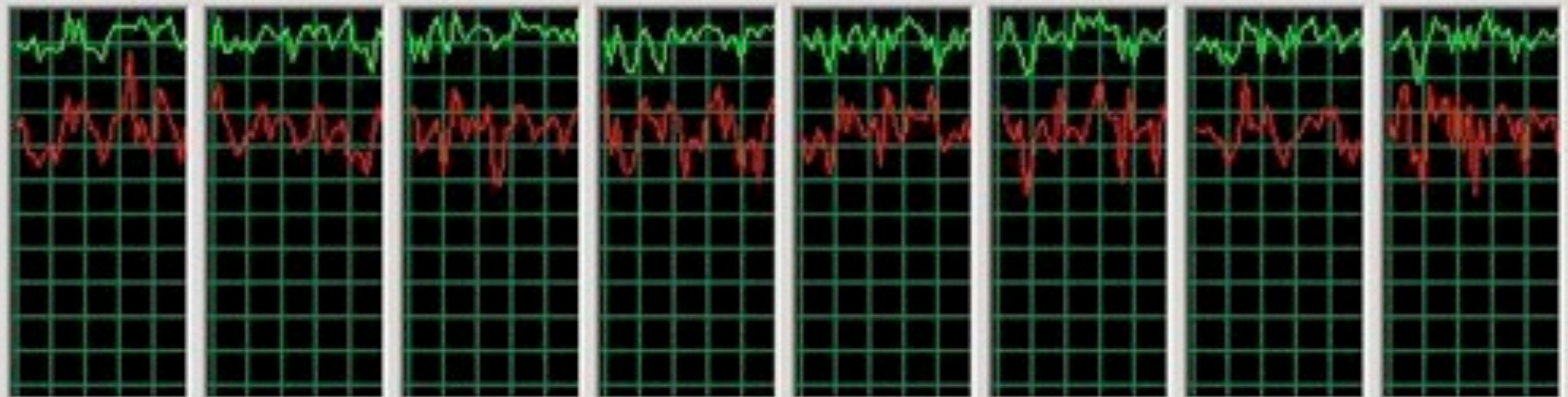


Applications | Processes | Services | Performance | Networking | Users |

CPU Usage



CPU Usage History

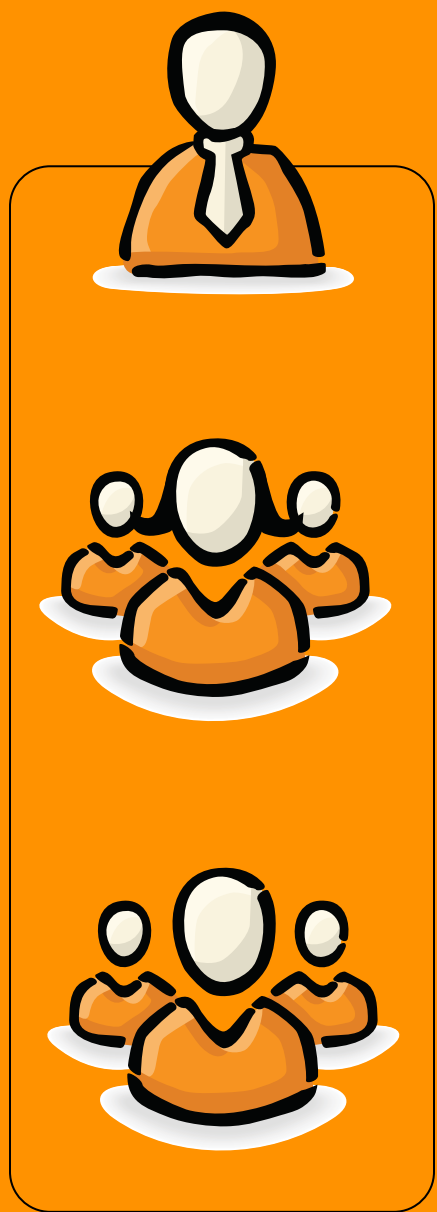




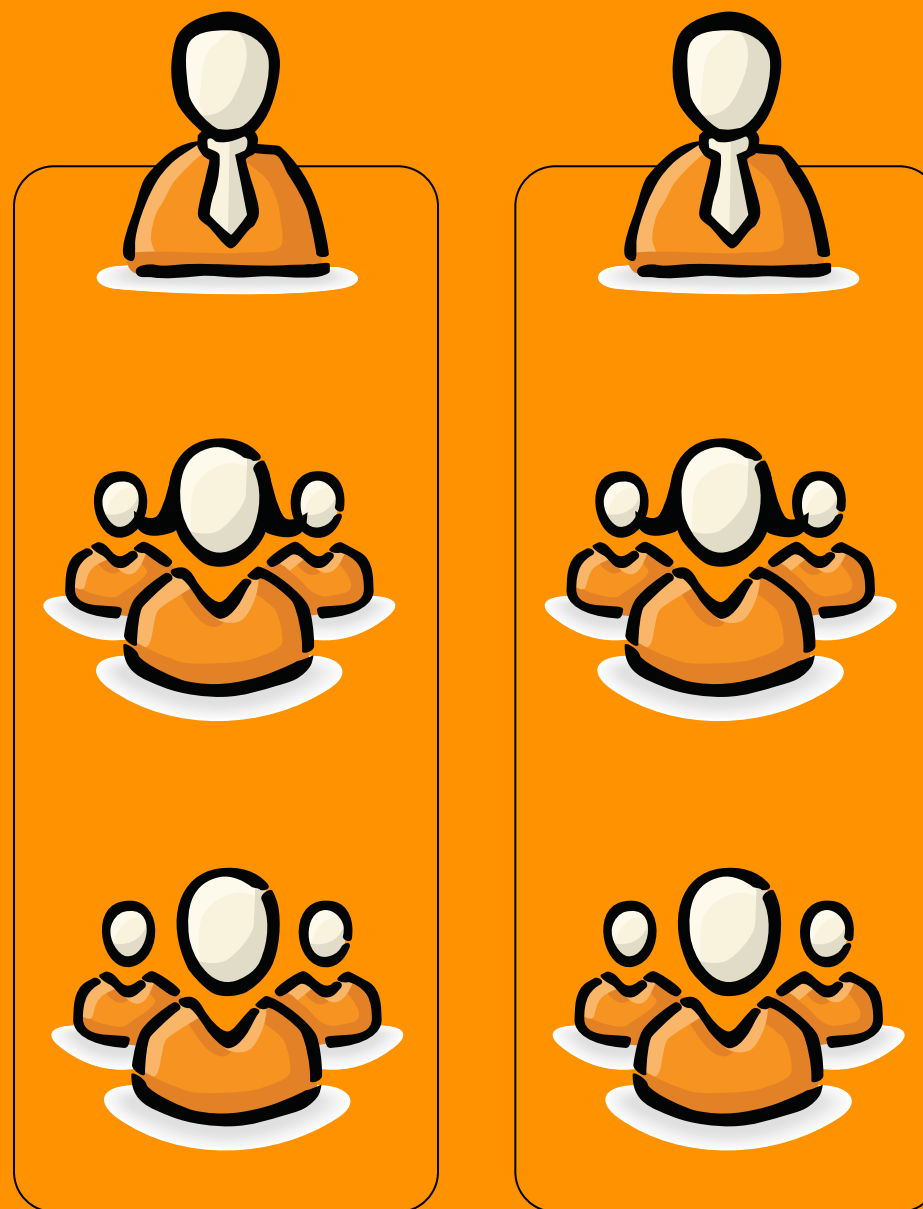
*Then why do we have to*  
**WORK WITHOUT SLACK?**



**MBA in 5 min.**



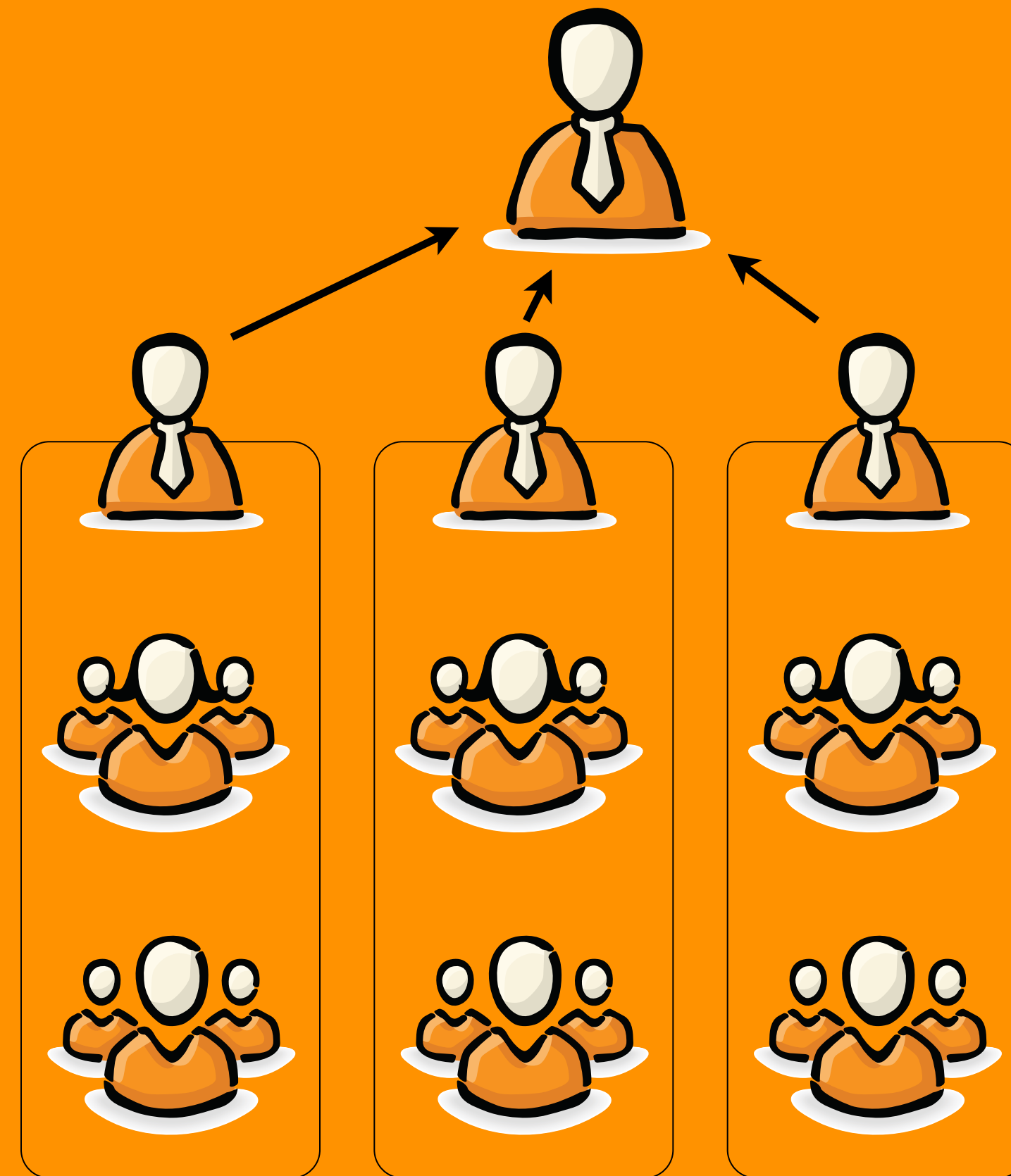




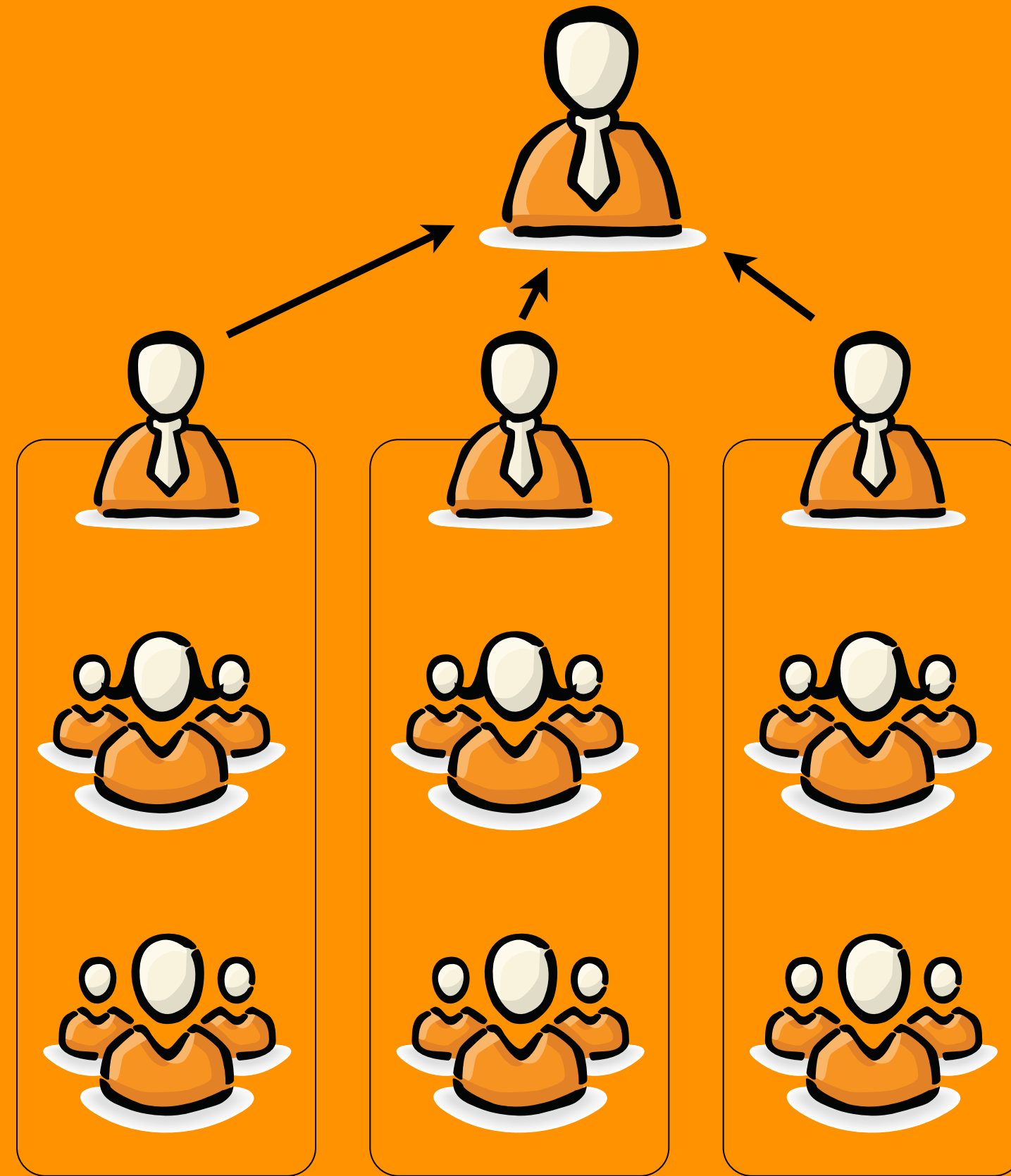




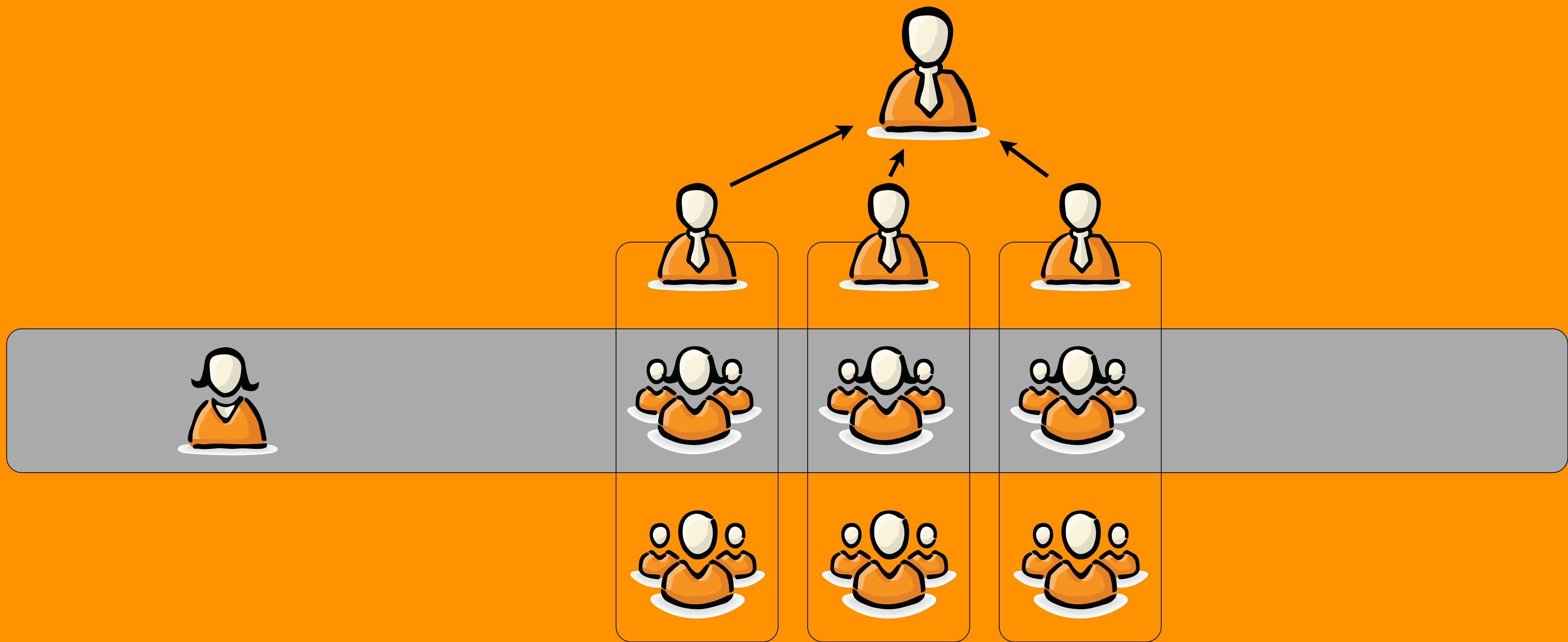




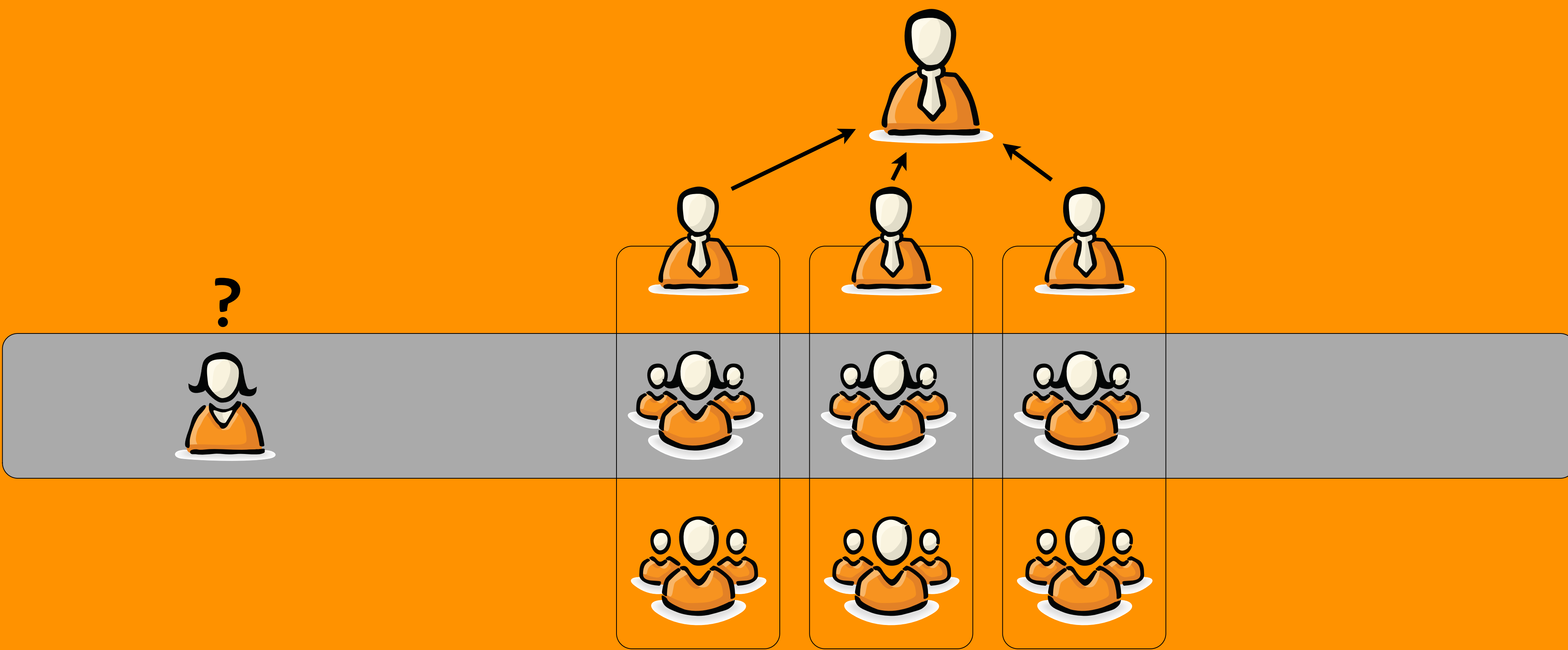




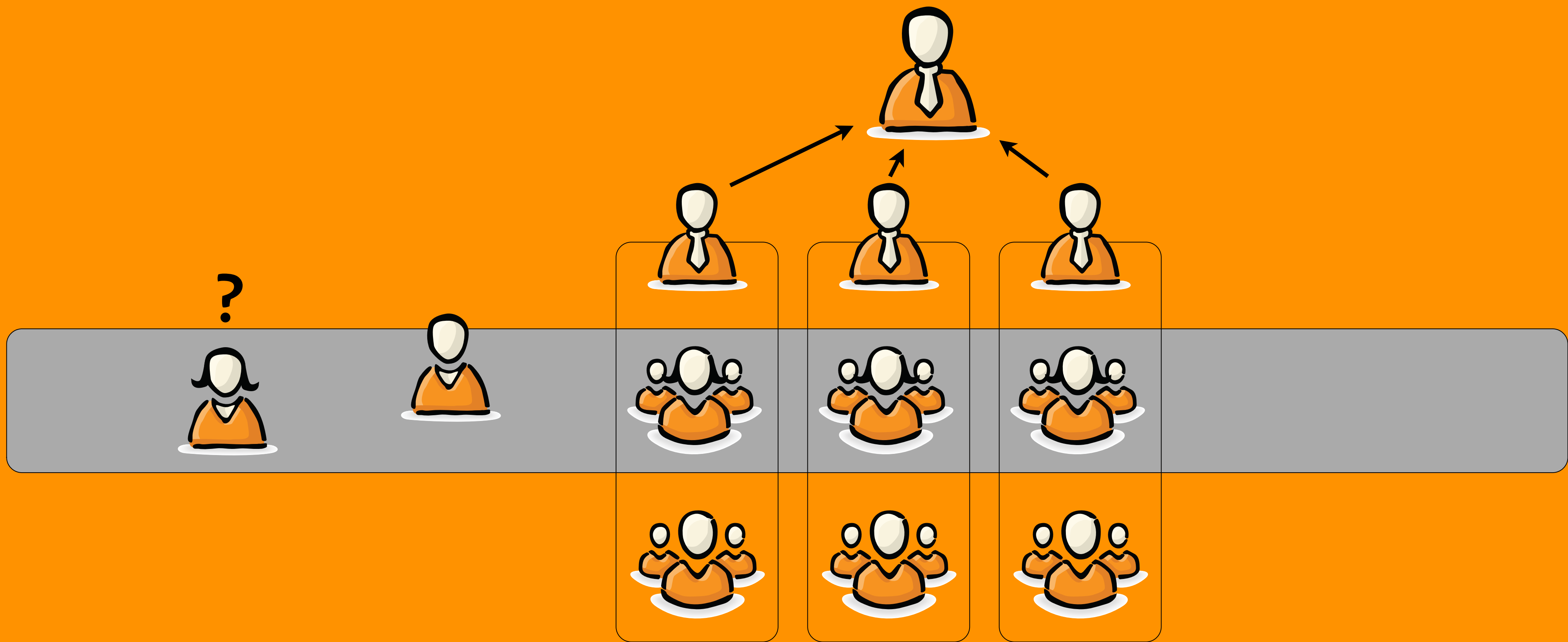




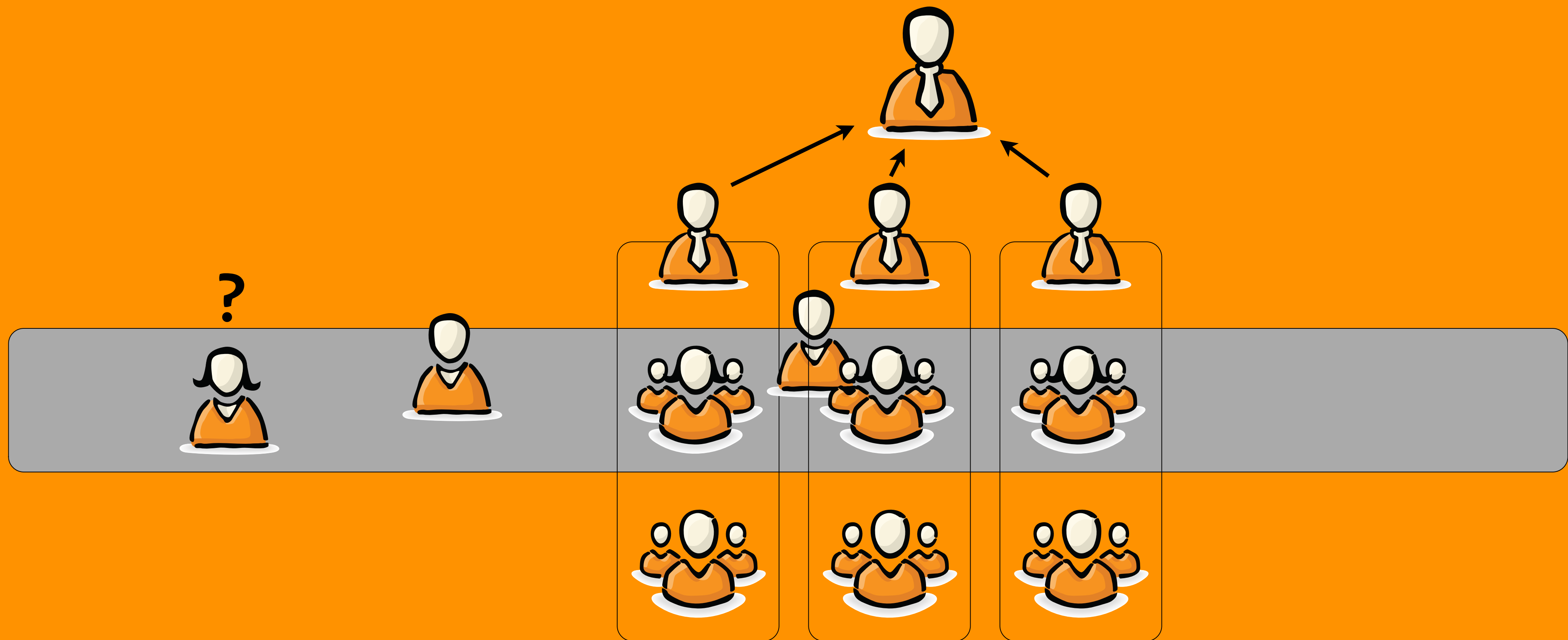




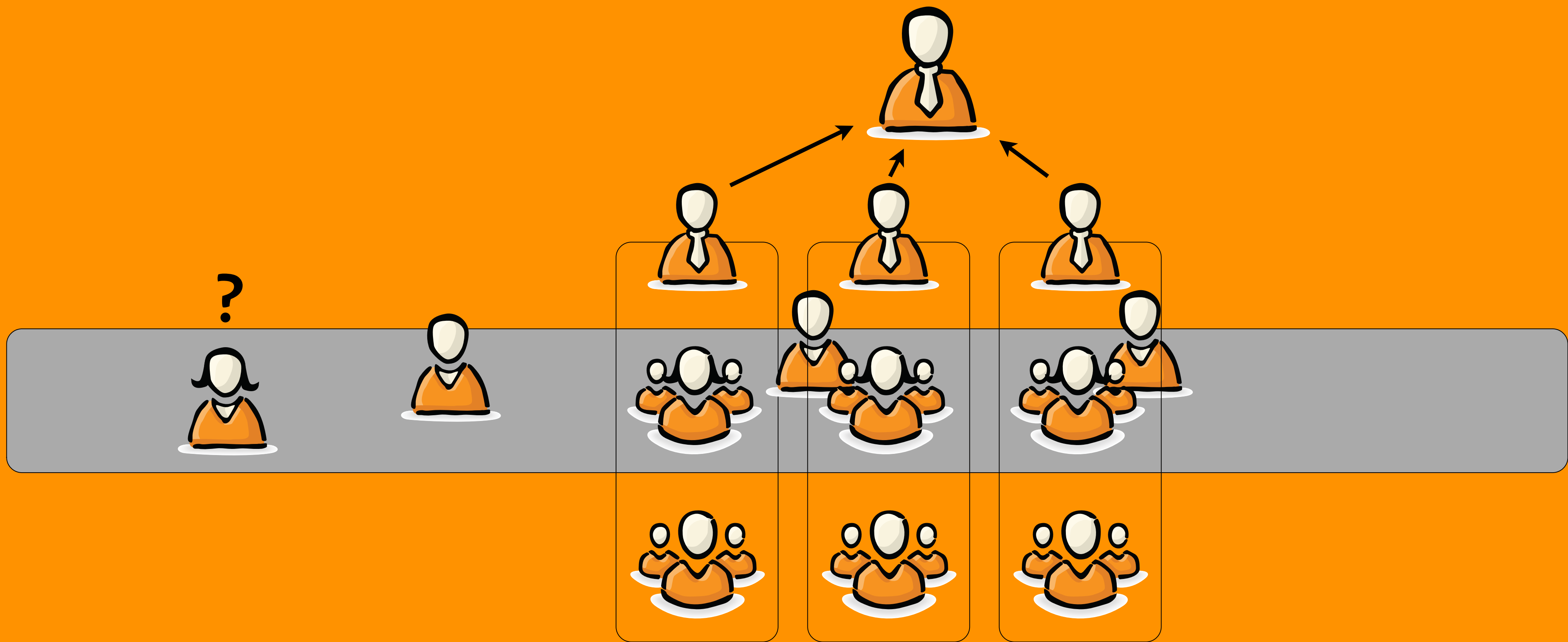




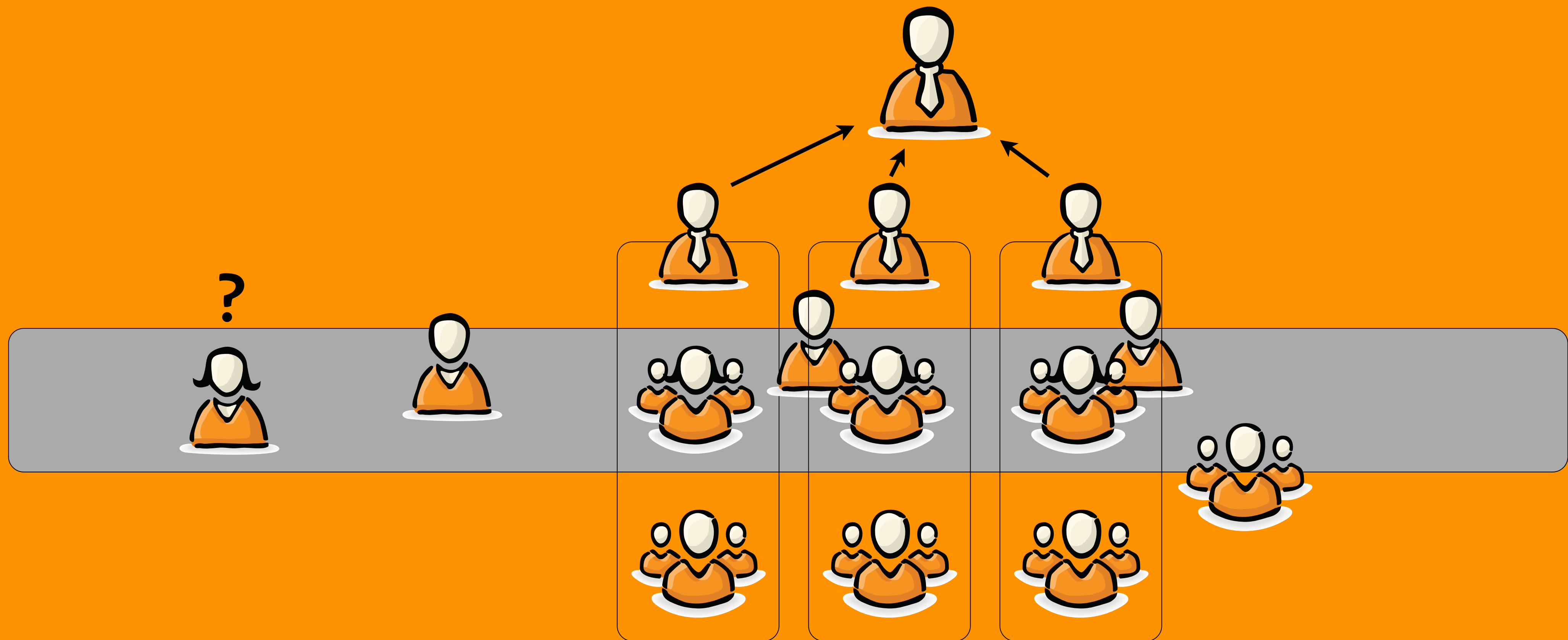




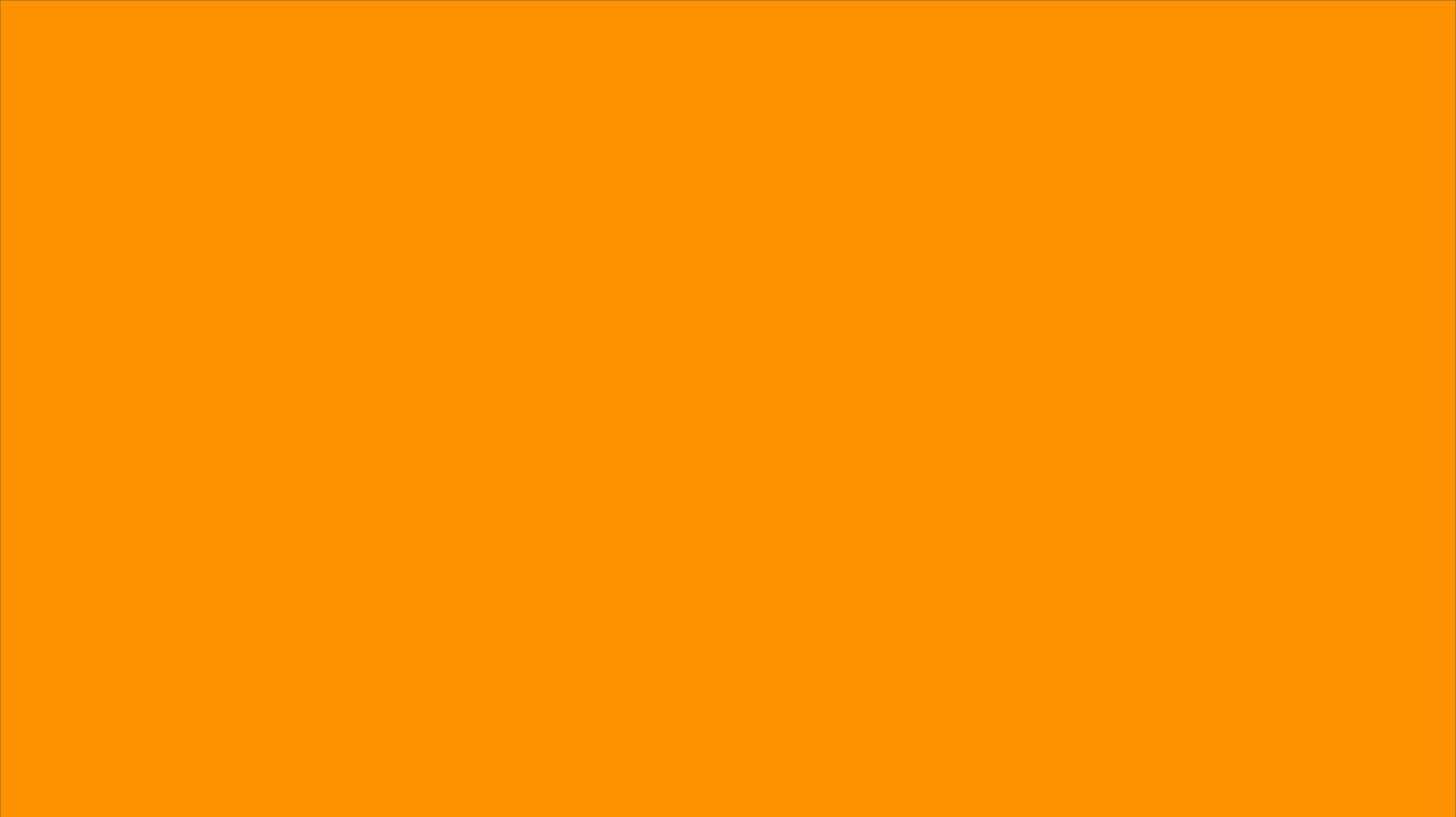








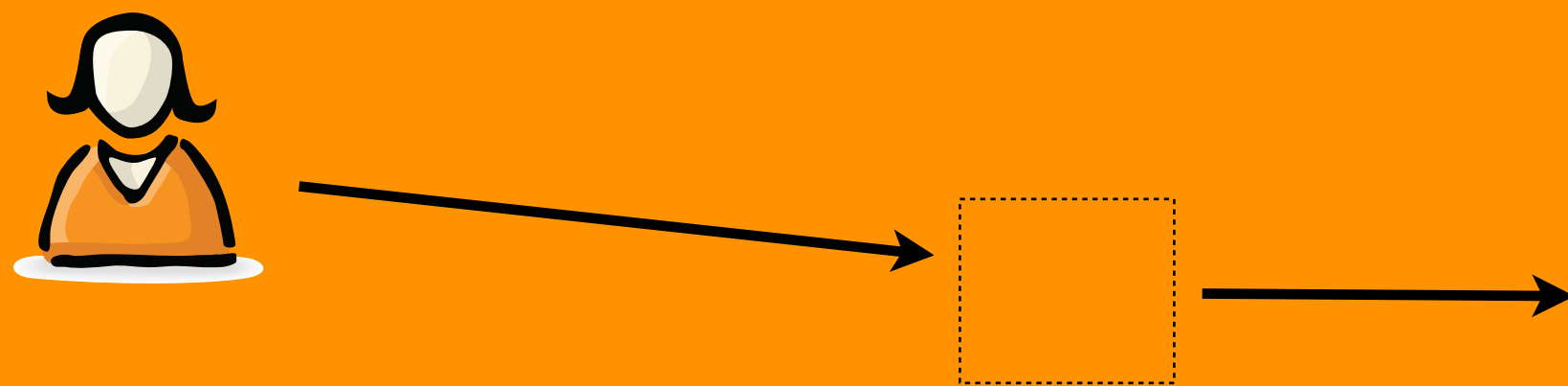




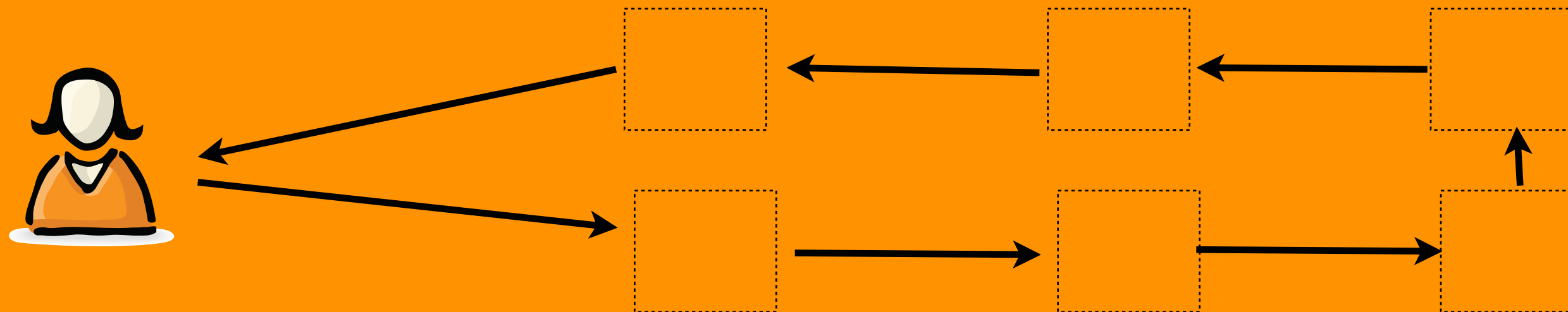




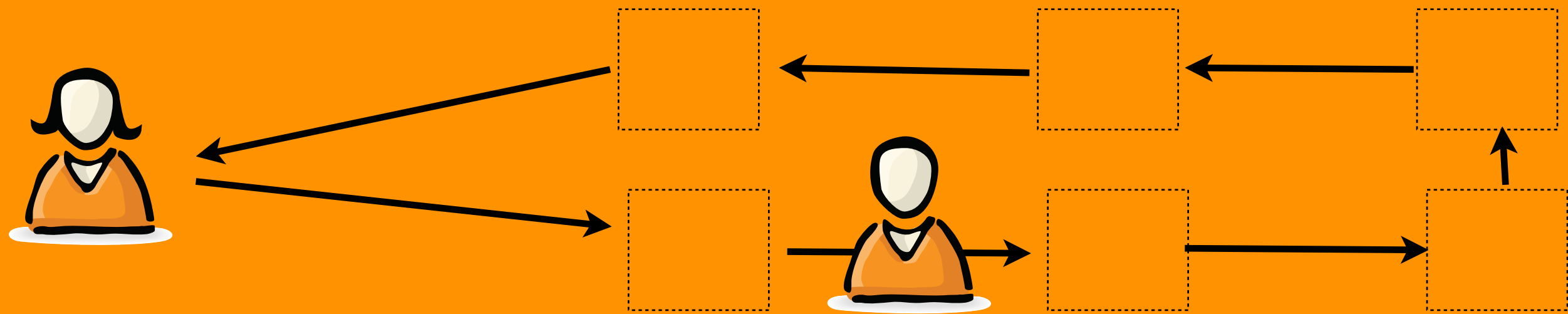


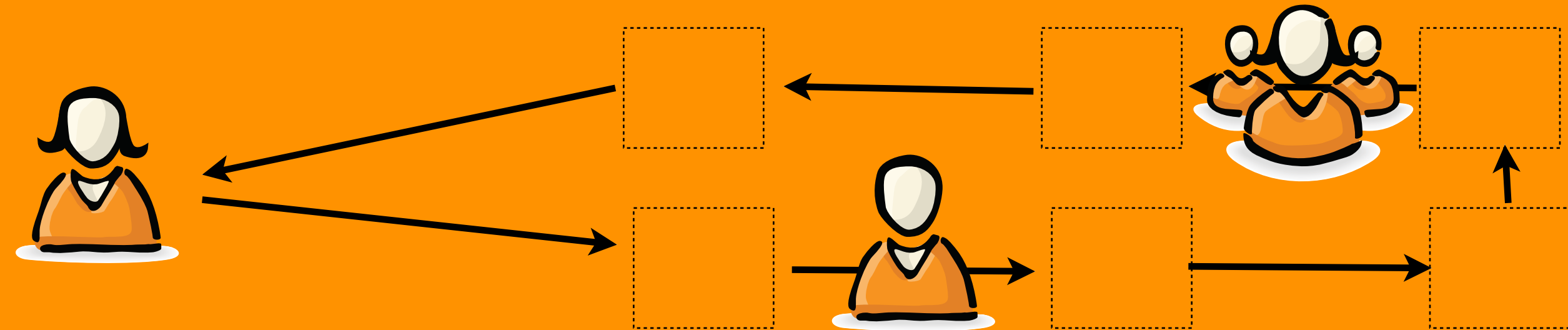




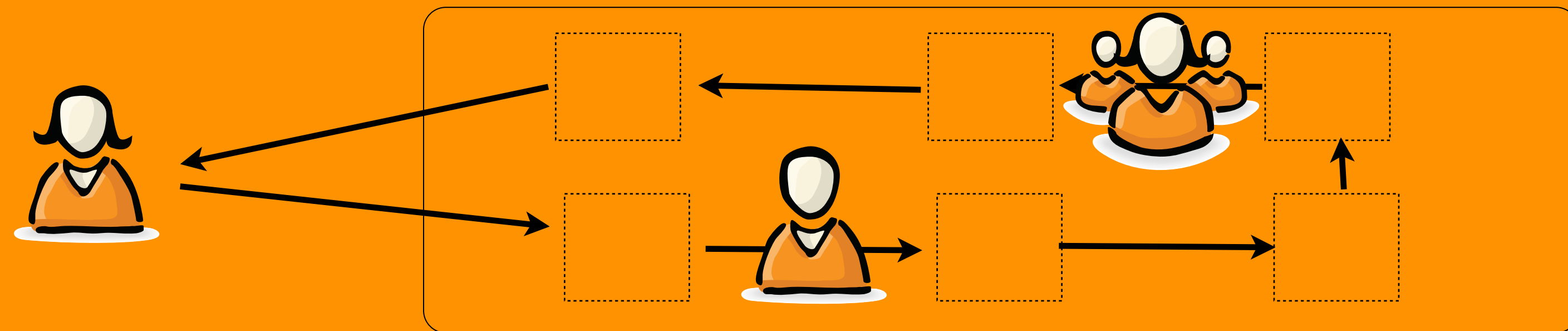


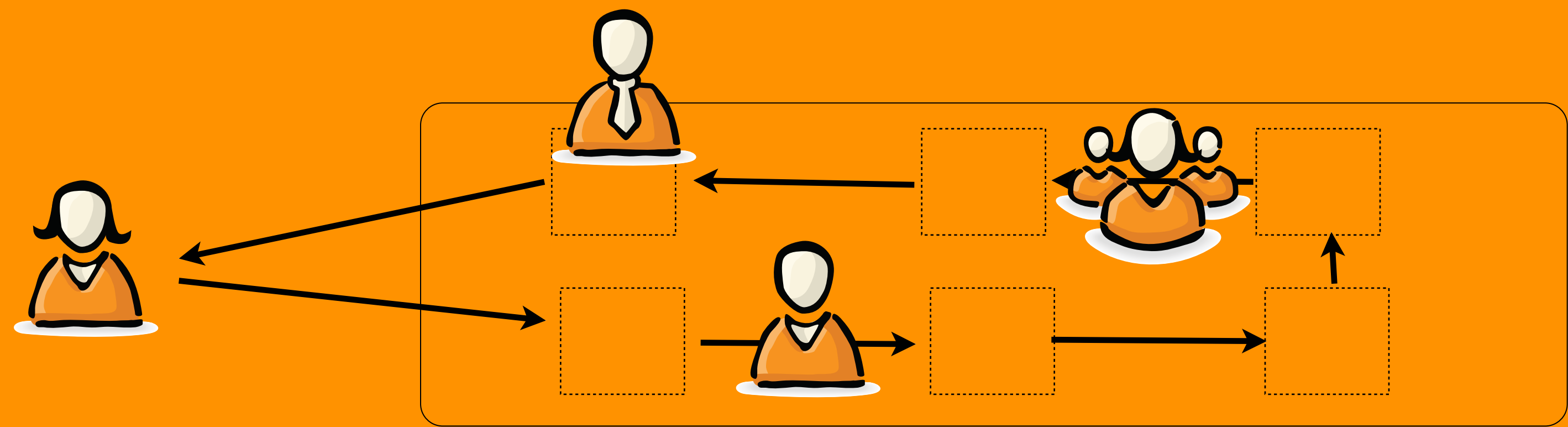




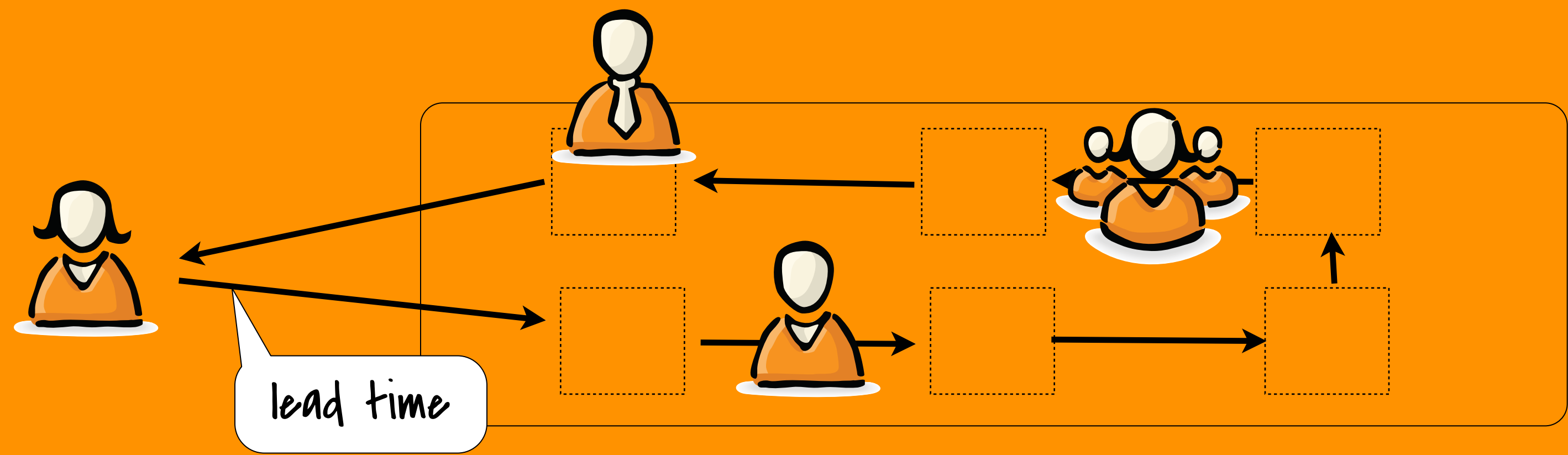


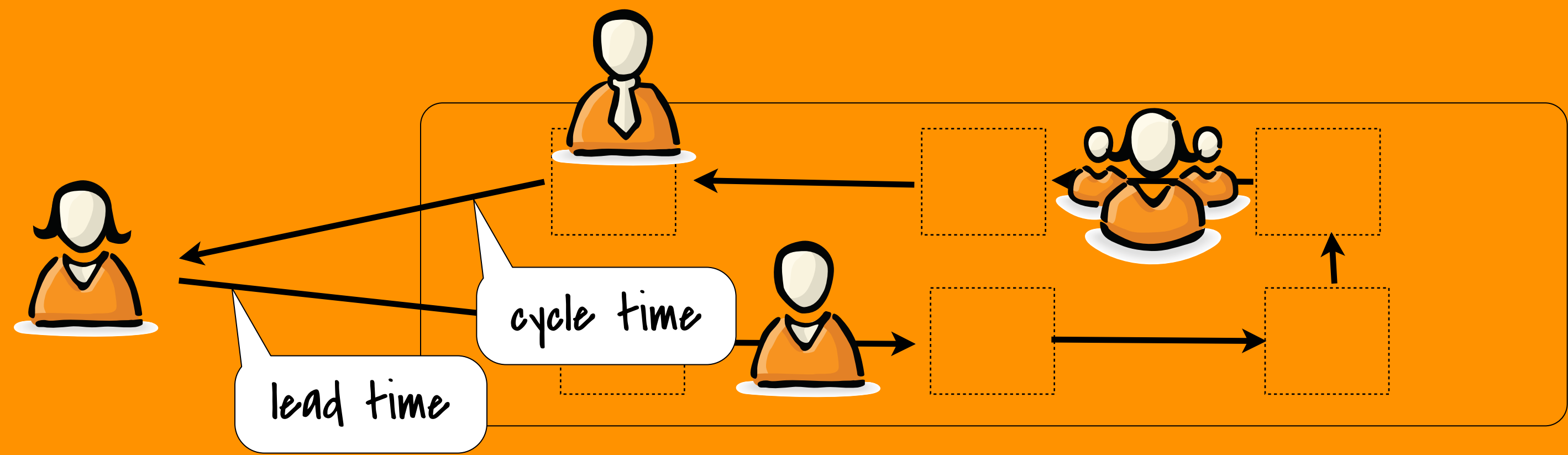




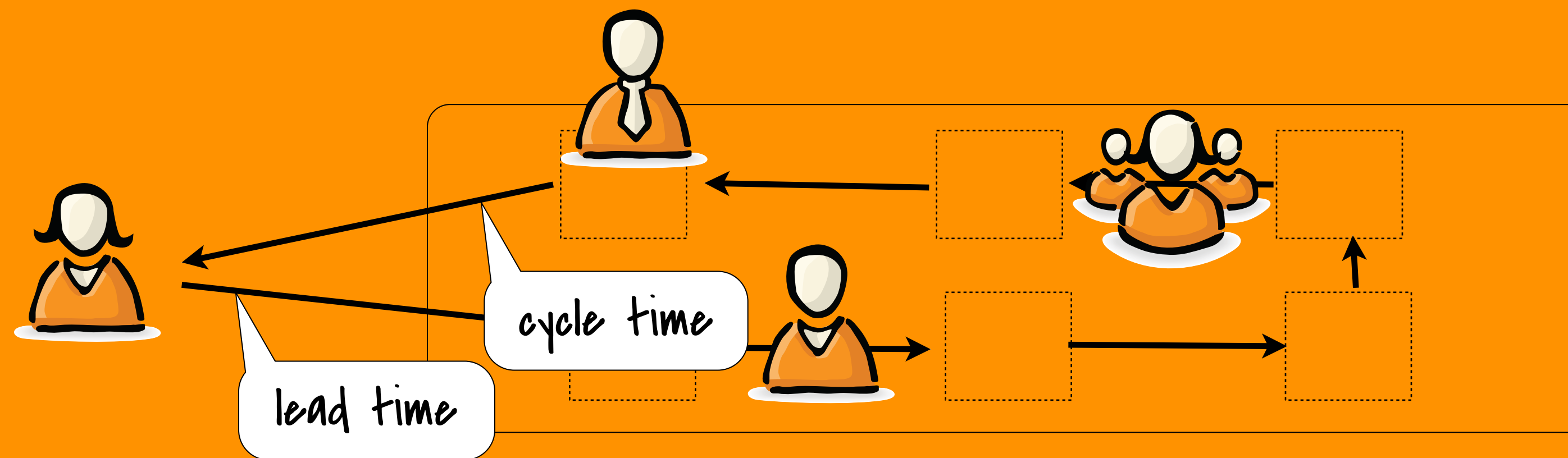
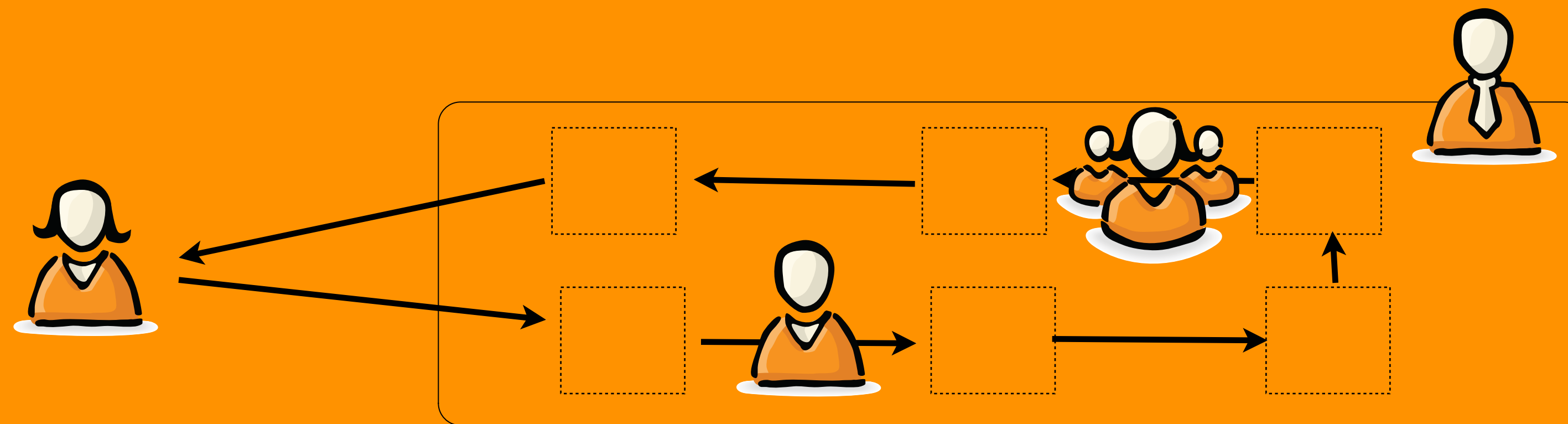


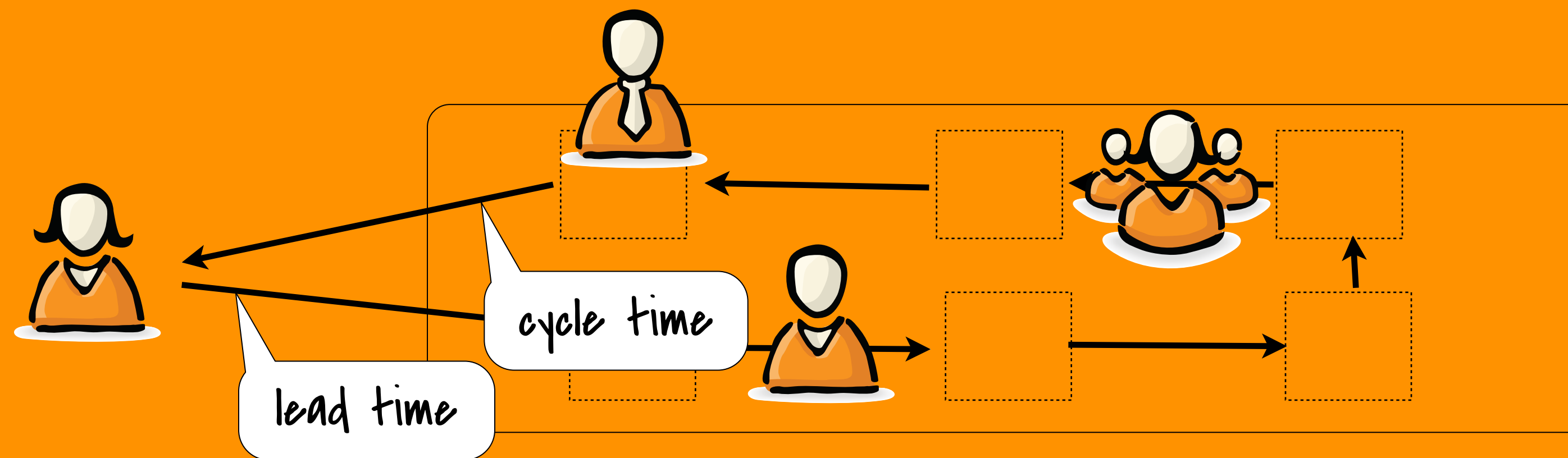
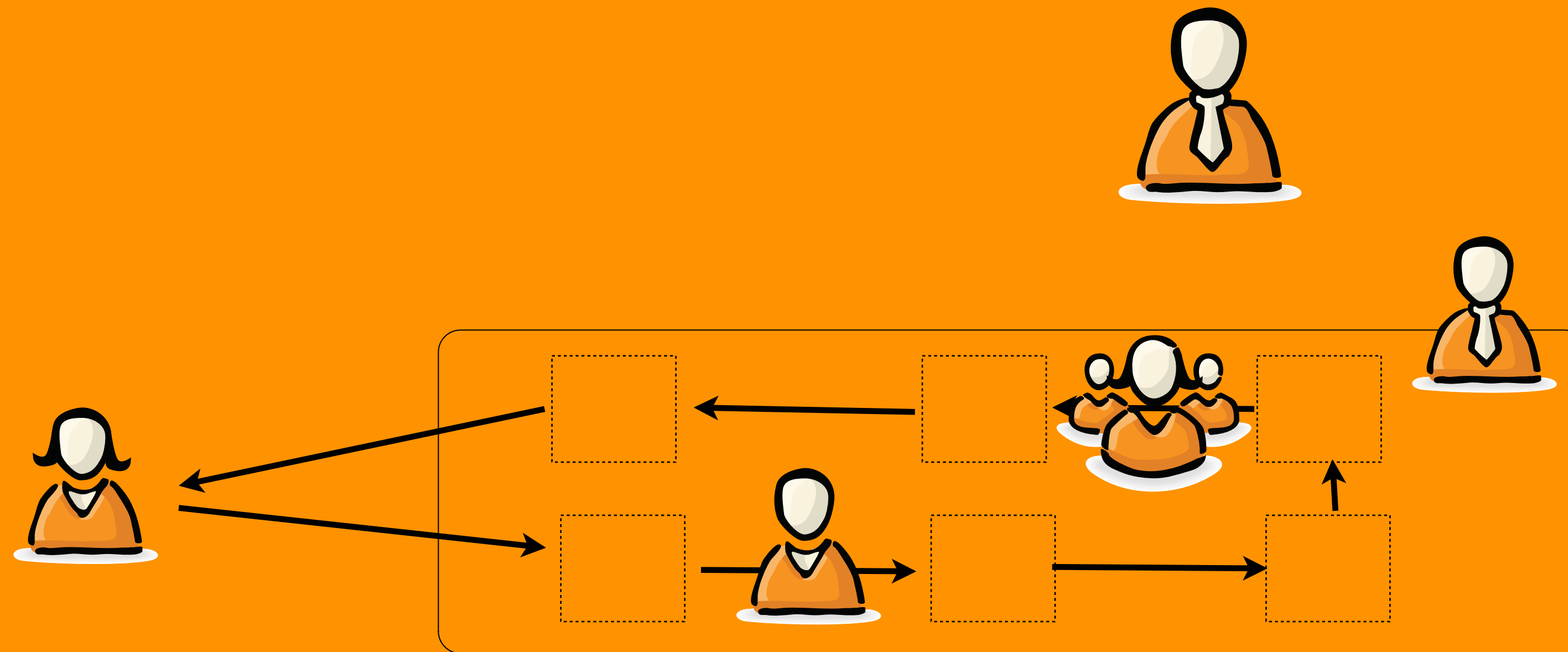




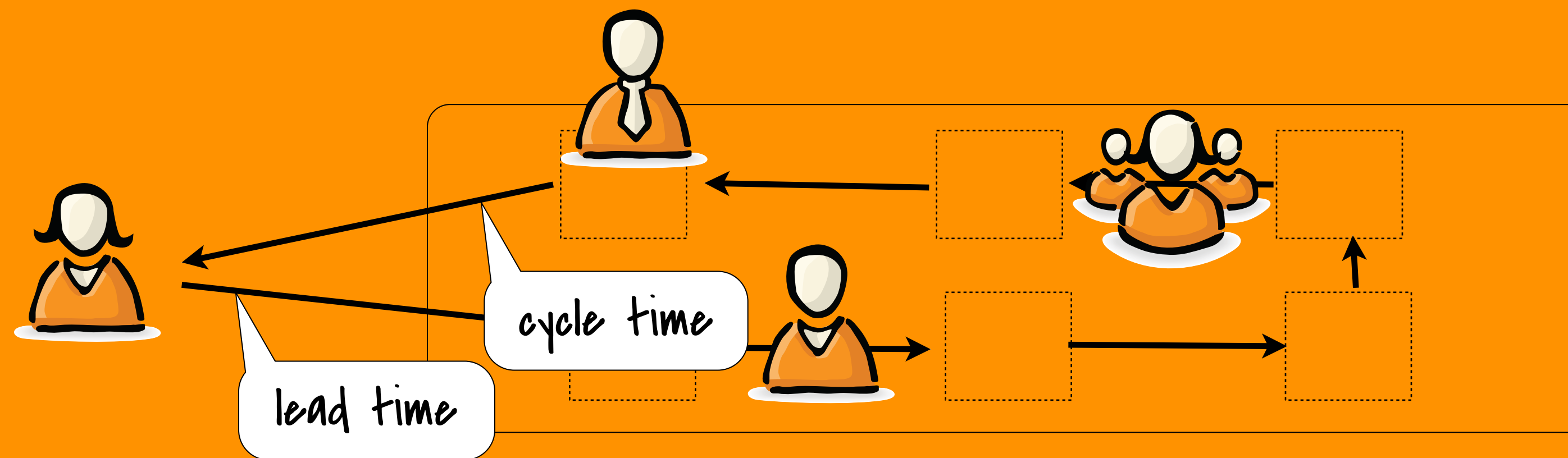
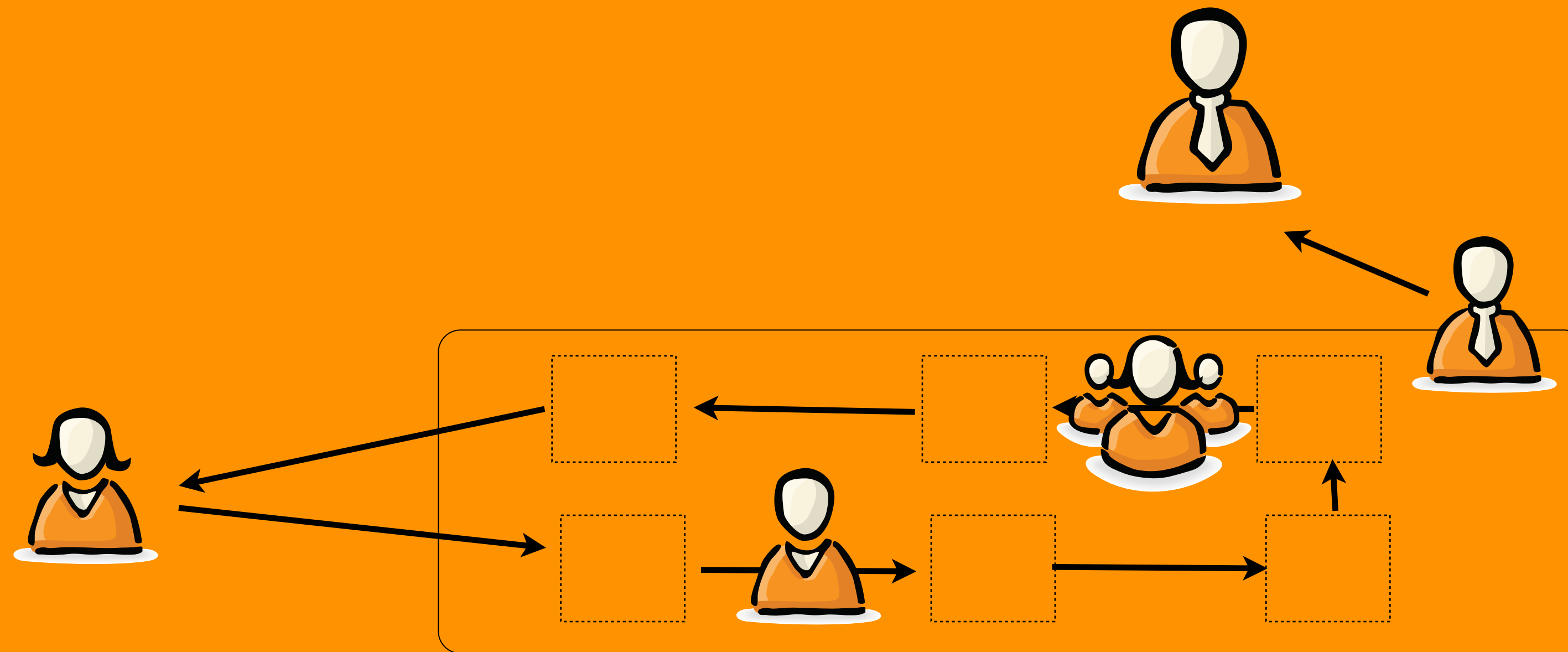


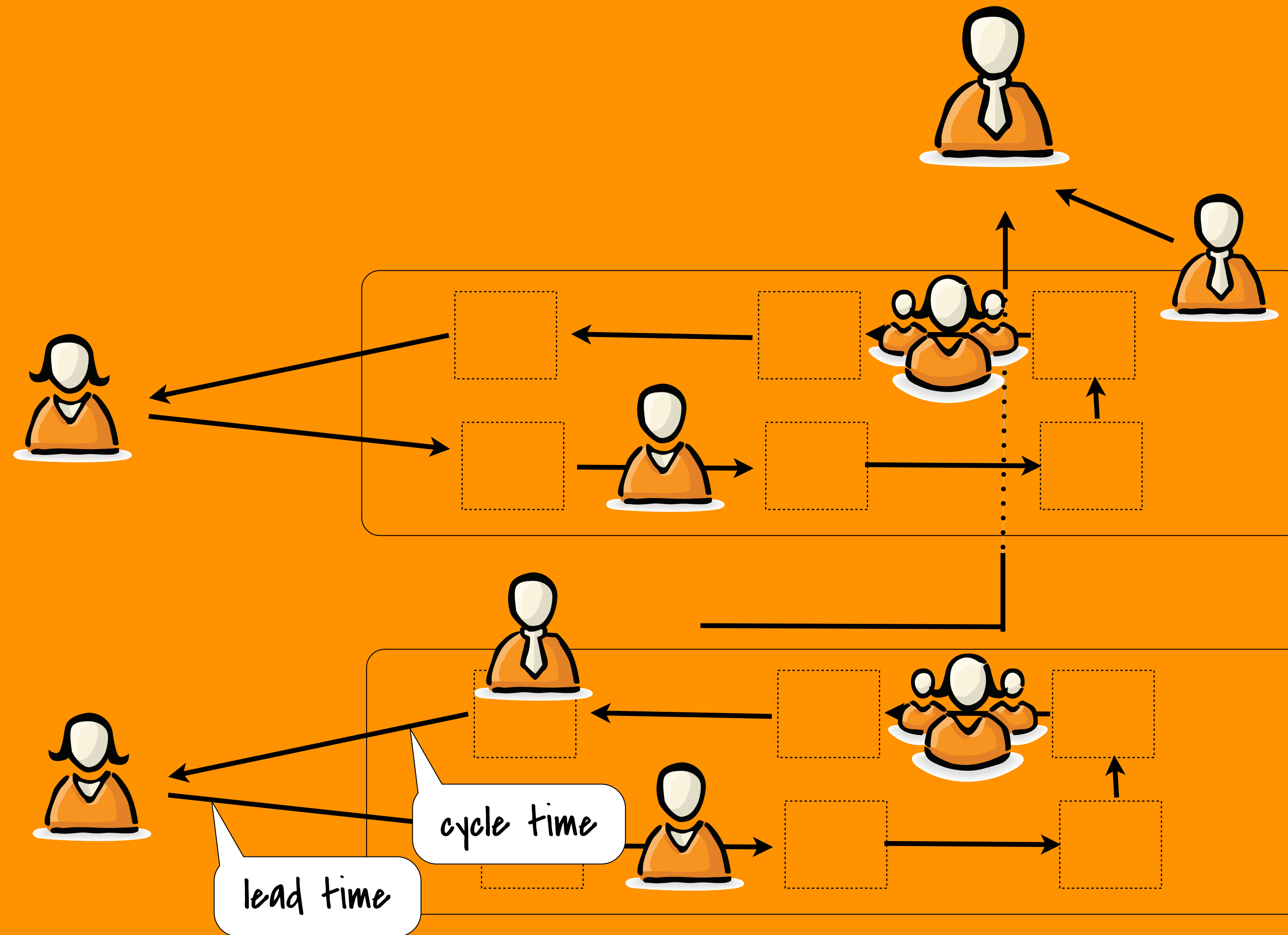




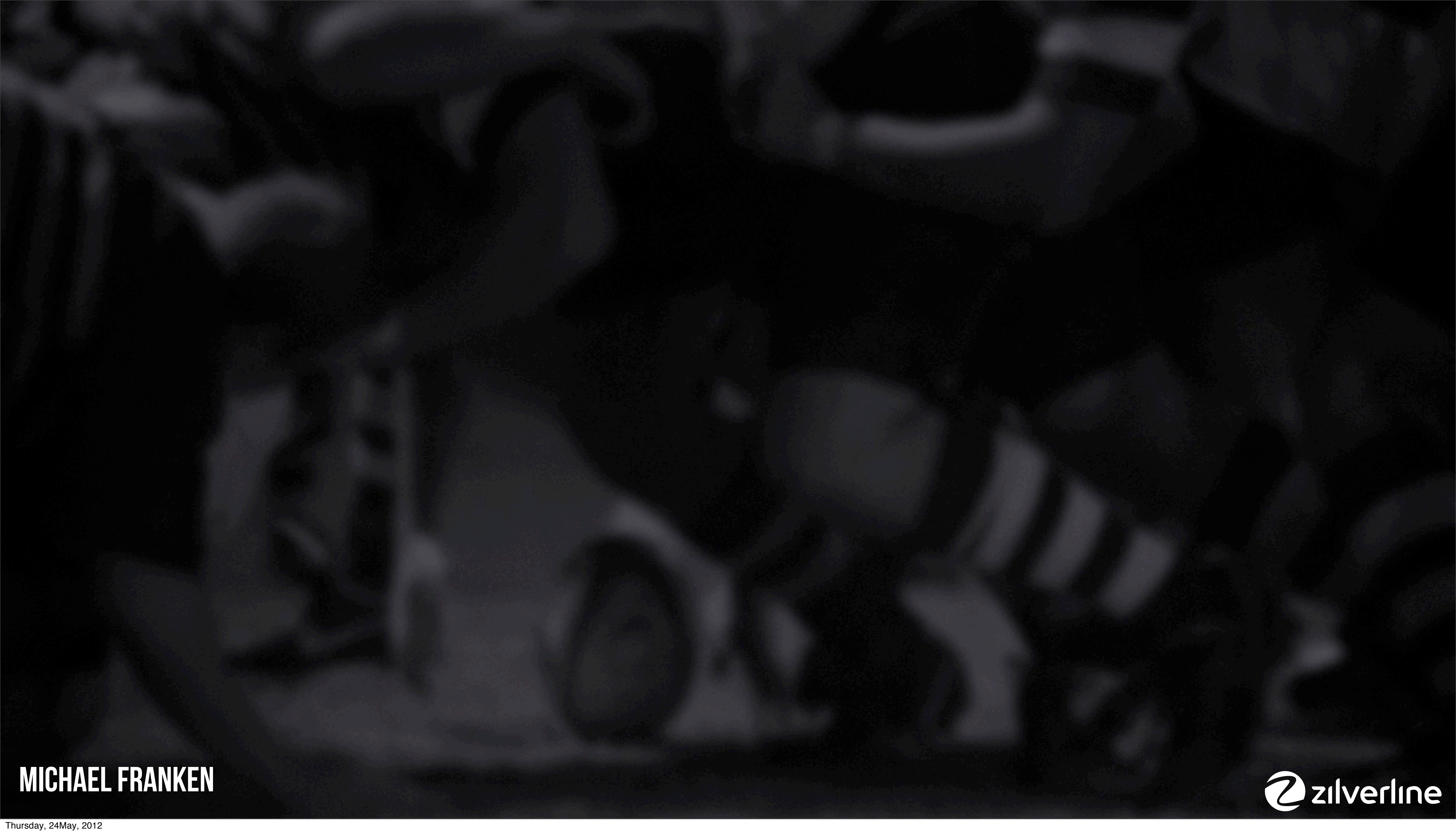












**MICHAEL FRANKEN**





# Start Pulling Agile





# START PULLING



# START PULLING

## PRODUCT OWNER

# START PULLING

## PRODUCT OWNER

- INTRINSIC **MOTIVATION**



# START PULLING

## PRODUCT OWNER

- INTRINSIC **MOTIVATION**
- MMF, **DISCOVER** HOW USERS USE

# START PULLING

## PRODUCT OWNER

- INTRINSIC **MOTIVATION**
- MMF, **DISCOVER** HOW USERS USE
- NO TASKS, LOTS OF **CONTEXT**



# START PULLING

## PRODUCT OWNER

- INTRINSIC **MOTIVATION**
- MMF, **DISCOVER** HOW USERS USE
- NO TASKS, LOTS OF **CONTEXT**

## TEAM

# START PULLING

## PRODUCT OWNER

- INTRINSIC **MOTIVATION**
- MMF, **DISCOVER** HOW USERS USE
- NO TASKS, LOTS OF **CONTEXT**

## TEAM

- CODE **FEATURES**, NO FRAMEWORK



# START PULLING

## PRODUCT OWNER

- INTRINSIC **MOTIVATION**
- MMF, **DISCOVER** HOW USERS USE
- NO TASKS, LOTS OF **CONTEXT**

## TEAM

- CODE **FEATURES**, NO FRAMEWORK
- SLACK FOR **EARLY** ROI

# START PULLING

## PRODUCT OWNER

- INTRINSIC **MOTIVATION**
- MMF, **DISCOVER** HOW USERS USE
- NO TASKS, LOTS OF **CONTEXT**

## TEAM

- CODE **FEATURES**, NO FRAMEWORK
- SLACK FOR **EARLY** ROI
- BUILD **QUALITY** IN



**IN ORDER TO** <benefit>

**AS A** <role>

**I WANT** <feature>

# SCRUM

- IS A **DEVELOPMENT** METHODOLOGY
- MAKES TEAMS GO **FASTER**
- SAVES **COSTS**
- IS ABOUT **EFFICIENCY**
- NEEDS TO BE **EMBEDDED** IN THE ORGANIZATION



# SCRUM

- IS A **DEVELOPMENT** METHODOLOGY
- MAKES TEAMS GO **FASTER**
- SAVES **COSTS**
- IS ABOUT **EFFICIENCY**
- NEEDS TO BE **EMBEDDED** IN THE ORGANIZATION

*remember?*

# NEW PERCEPTION?

## SCRUM

## SCRUM

- IS A **DEVELOPMENT** METHODOLOGY
- MAKES TEAMS GO **FASTER**
- SAVES **COSTS**
- IS ABOUT **EFFICIENCY**
- NEEDS TO BE **EMBEDDED** IN THE ORGANIZATION



# NEW PERCEPTION?

## SCRUM

- IS A **LEADERSHIP** FRAMEWORK

## SCRUM

- IS A **DEVELOPMENT** METHODOLOGY
- MAKES TEAMS GO **FASTER**
- SAVES **COSTS**
- IS ABOUT **EFFICIENCY**
- NEEDS TO BE **EMBEDDED** IN THE ORGANIZATION

# NEW PERCEPTION?

## SCRUM

- IS A **LEADERSHIP** FRAMEWORK
- MAKES **DELIVERY** GO FASTER

## SCRUM

- IS A **DEVELOPMENT** METHODOLOGY
- MAKES TEAMS GO **FASTER**
- SAVES **COSTS**
- IS ABOUT **EFFICIENCY**
- NEEDS TO BE **EMBEDDED** IN THE ORGANIZATION



# NEW PERCEPTION?

## SCRUM

- IS A **LEADERSHIP** FRAMEWORK
- MAKES **DELIVERY** GO FASTER
- PRODUCES **VALUE**

## SCRUM

- IS A **DEVELOPMENT** METHODOLOGY
- MAKES TEAMS GO **FASTER**
- SAVES **COSTS**
- IS ABOUT **EFFICIENCY**
- NEEDS TO BE **EMBEDDED** IN THE ORGANIZATION

# NEW PERCEPTION?

## SCRUM

- IS A **LEADERSHIP** FRAMEWORK
- MAKES **DELIVERY** GO FASTER
- PRODUCES **VALUE**
- IS ABOUT **EFFECTIVENESS**

## SCRUM

- IS A **DEVELOPMENT** METHODOLOGY
- MAKES TEAMS GO **FASTER**
- SAVES **COSTS**
- IS ABOUT **EFFICIENCY**
- NEEDS TO BE **EMBEDDED** IN THE ORGANIZATION



# NEW PERCEPTION?

## SCRUM

- IS A **LEADERSHIP** FRAMEWORK
- MAKES **DELIVERY** GO FASTER
- PRODUCES **VALUE**
- IS ABOUT **EFFECTIVENESS**
- **CHANGES** THE ENTIRE ORGANIZATION

## SCRUM

- IS A **DEVELOPMENT** METHODOLOGY
- MAKES TEAMS GO **FASTER**
- SAVES **COSTS**
- IS ABOUT **EFFICIENCY**
- NEEDS TO BE **EMBEDDED** IN THE ORGANIZATION

Remember your  
**BEST PROJECT EVER?**  
Our Daily Business

[INFO@ZILVERLINE.COM](mailto:INFO@ZILVERLINE.COM)

[@ZILVERLINE](https://www.zilverline.com)

 **zilverline**  
[info@zilverline.com](mailto:info@zilverline.com)