



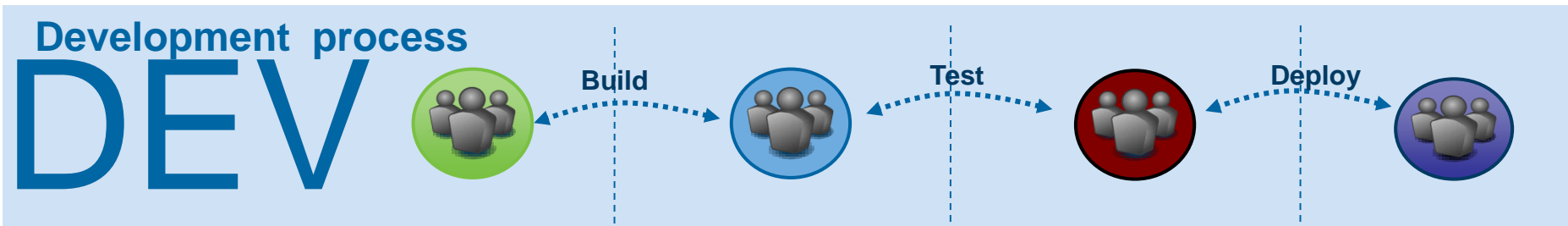
 UCALYPTUS

Agile Development Cloud

May 21, 2012

- Application Development Challenges
 - Dev process and infrastructure issues
- Agile Development Cloud from Eucalyptus & Electric Cloud
 - Best-in-class infrastructure cloud
 - Automated development process with integrated resource management
- Q&A

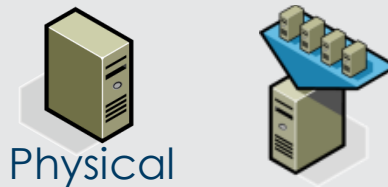
The Development Process is Complex



Manual process with many handoffs

Dedicated resources

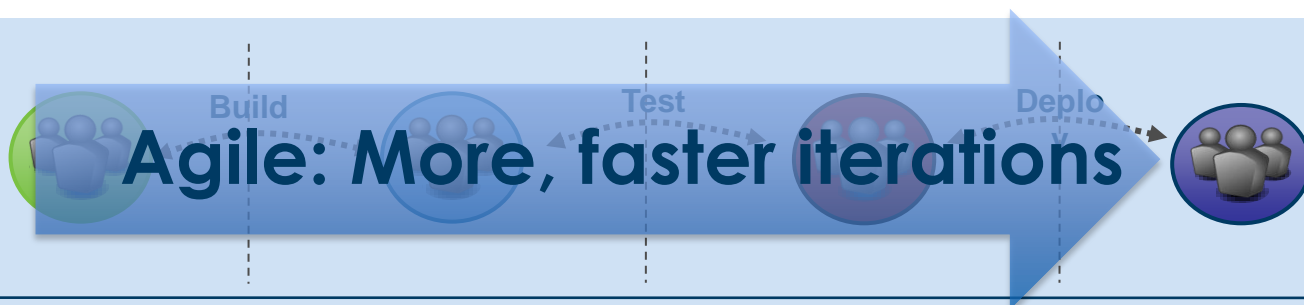
IT
IT resources



...and Increasing in Complexity



DEV



More platforms



More tools



More teams



IT



Dev Resource Needs Are Growing



DEV



Unlimited Resources

Delivered Fast

Customized

Needs to Get

Wants to Give

Standardized

Centrally managed

IT



Physical



The Impact of Manual Process & Non-optimal Resource Management



DEV



Slow TTM



Poor Software
Quality



Poor resource
Utilization

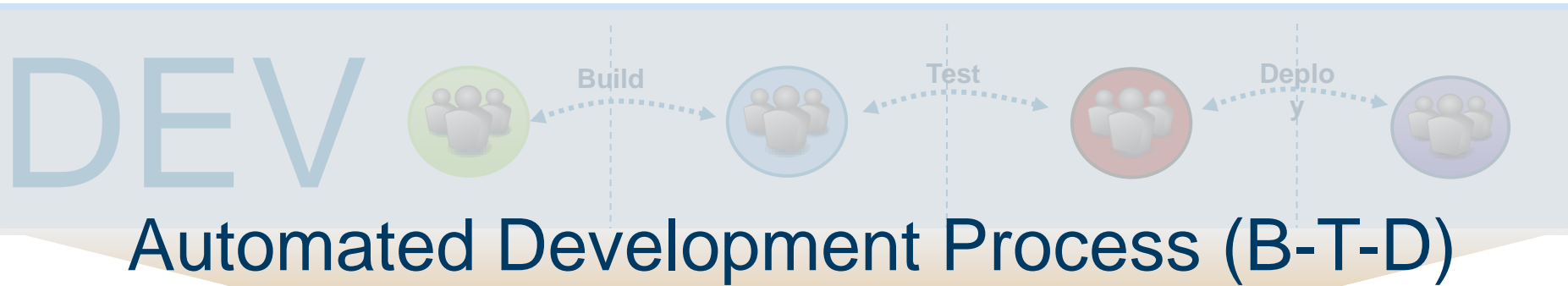
IT



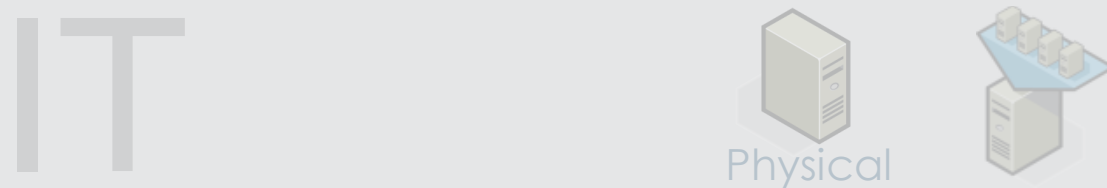
Physical



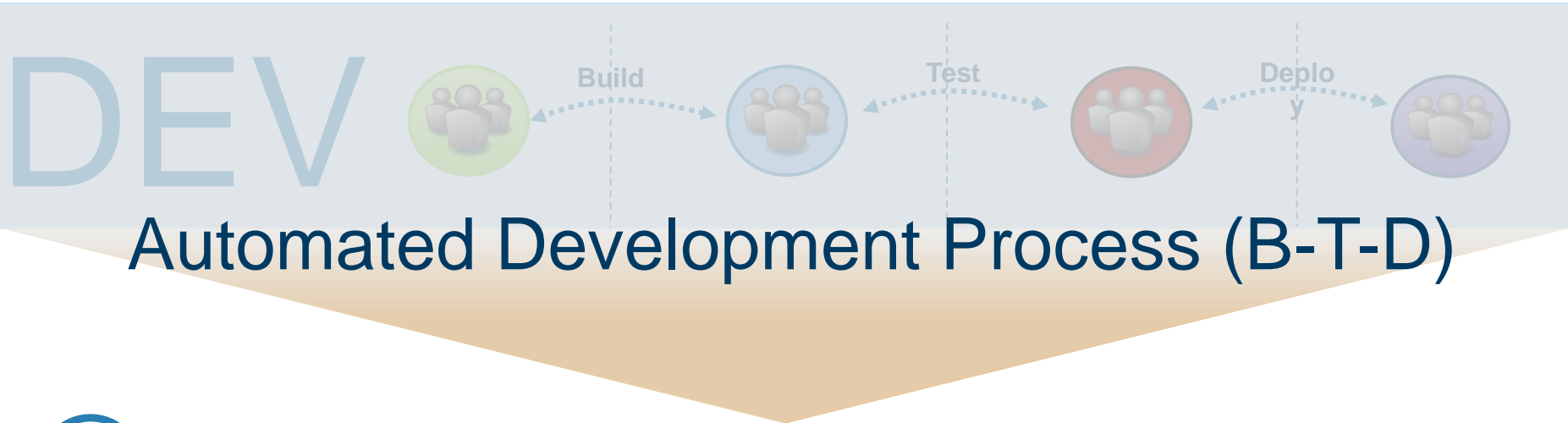
What is Needed?



Scalable, Agile, & Shared Infrastructure



7 Steps To Get There



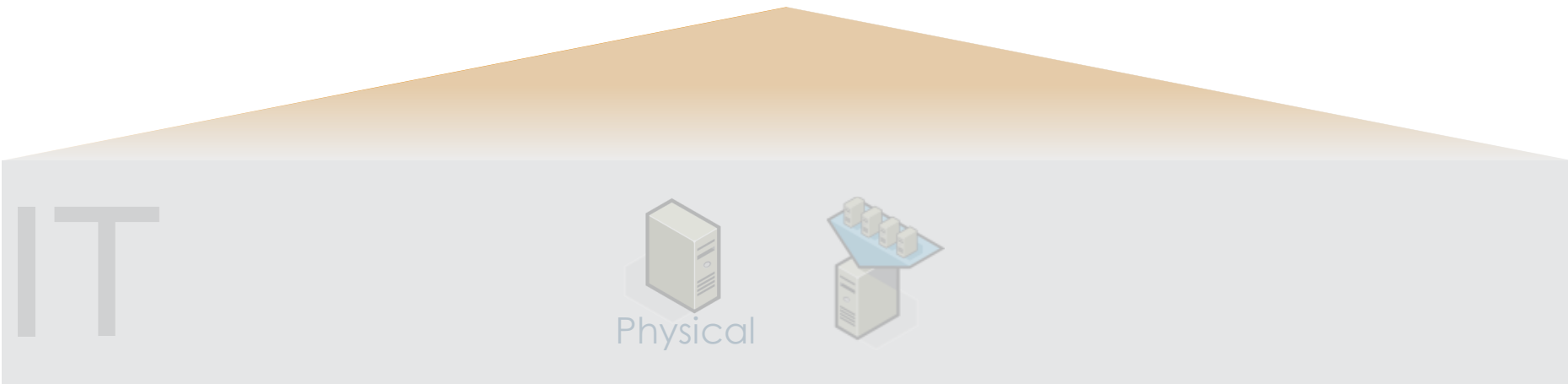
- 1 Model/Map your Software Development Process
- 2 Enable Automation of your Software Delivery Procedures
- 3 Report and Analyze Process Execution and Workflow

7 Steps To Get There

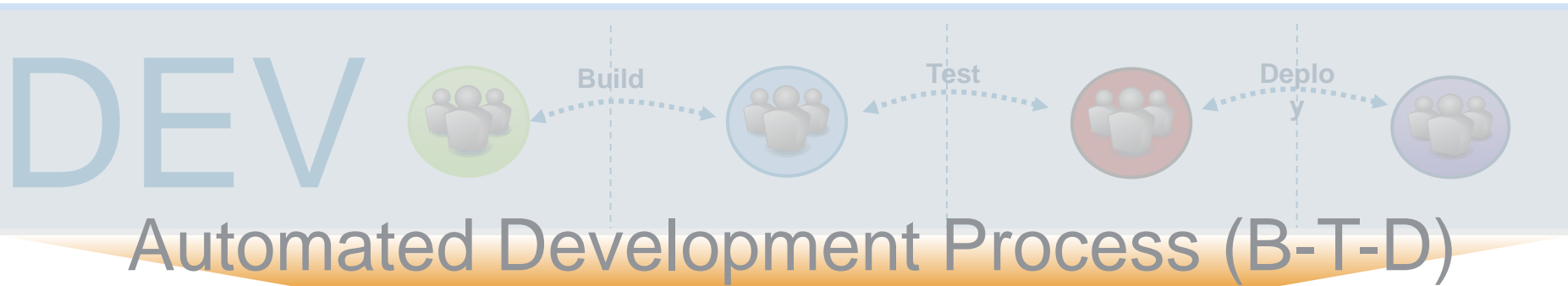


Scalable, Agile, & Shared Infrastructure

- 4 Define Valuable Infrastructure Services
- 5 Plan and Standardize the Cloud Platform
- 6 Plan and Architect the Deployment



7 Steps To Get There



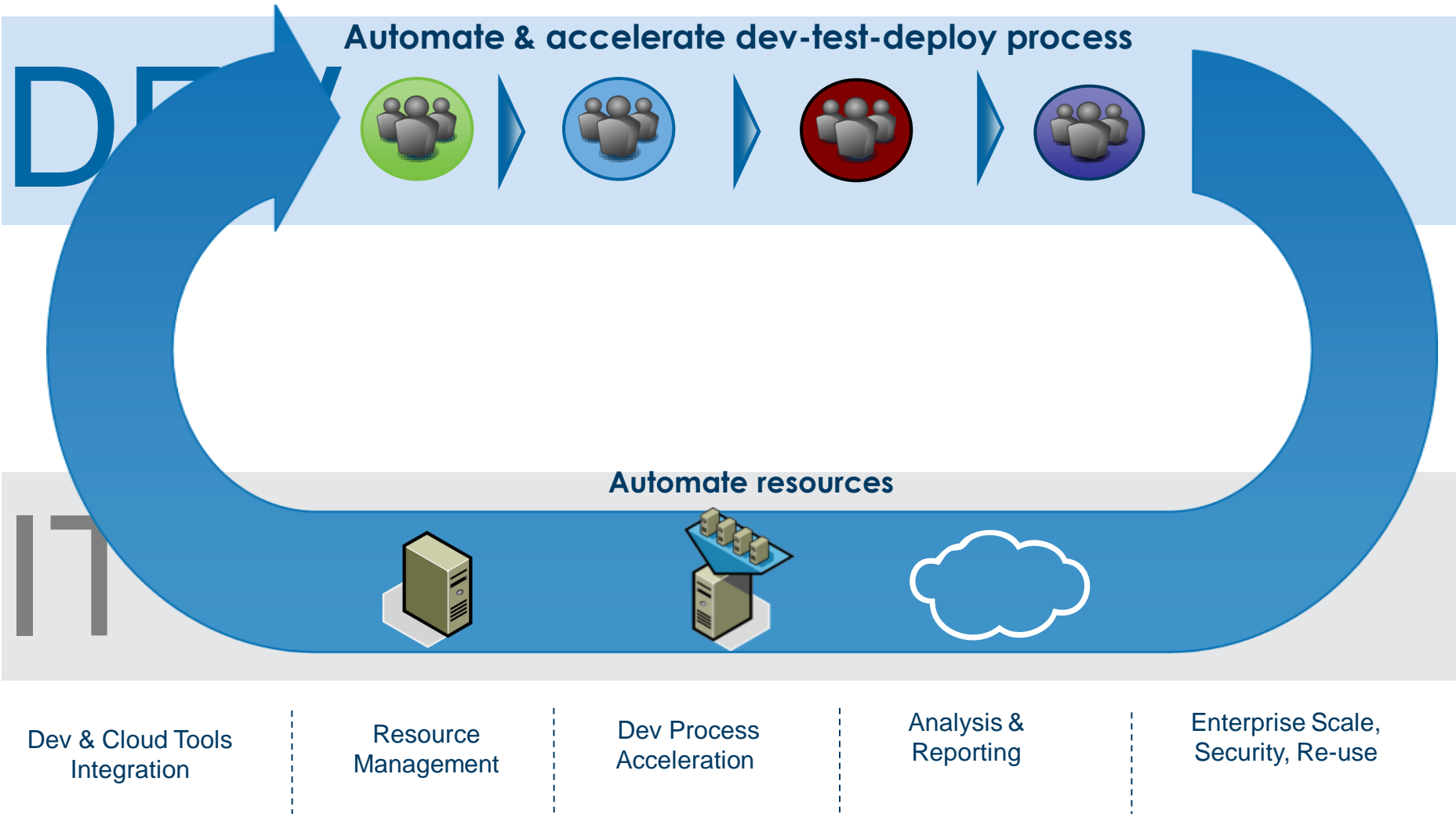
7 Integrated process with infrastructure

Scalable, Agile, & Shared Infrastructure



Electric Cloud: Dev Cloud Automation

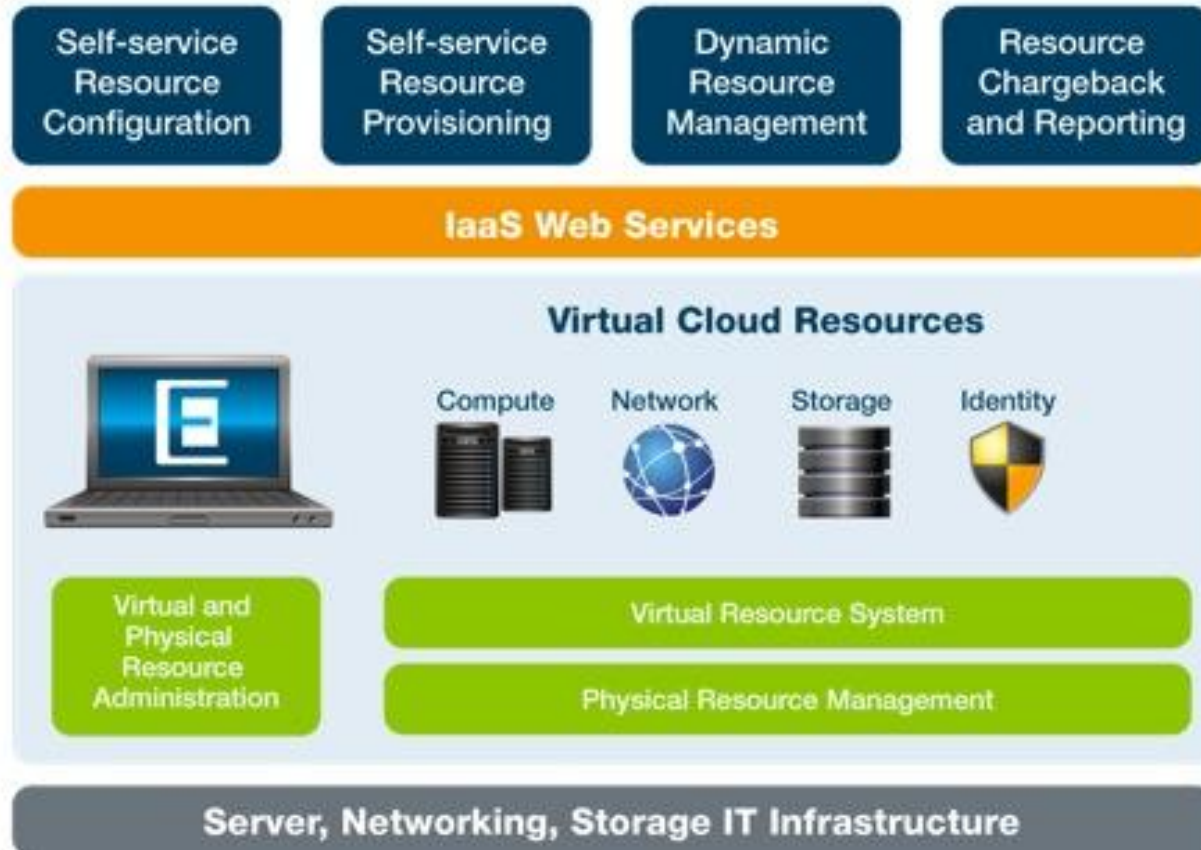
Automates end-to-end process & resources



Eucalyptus IaaS



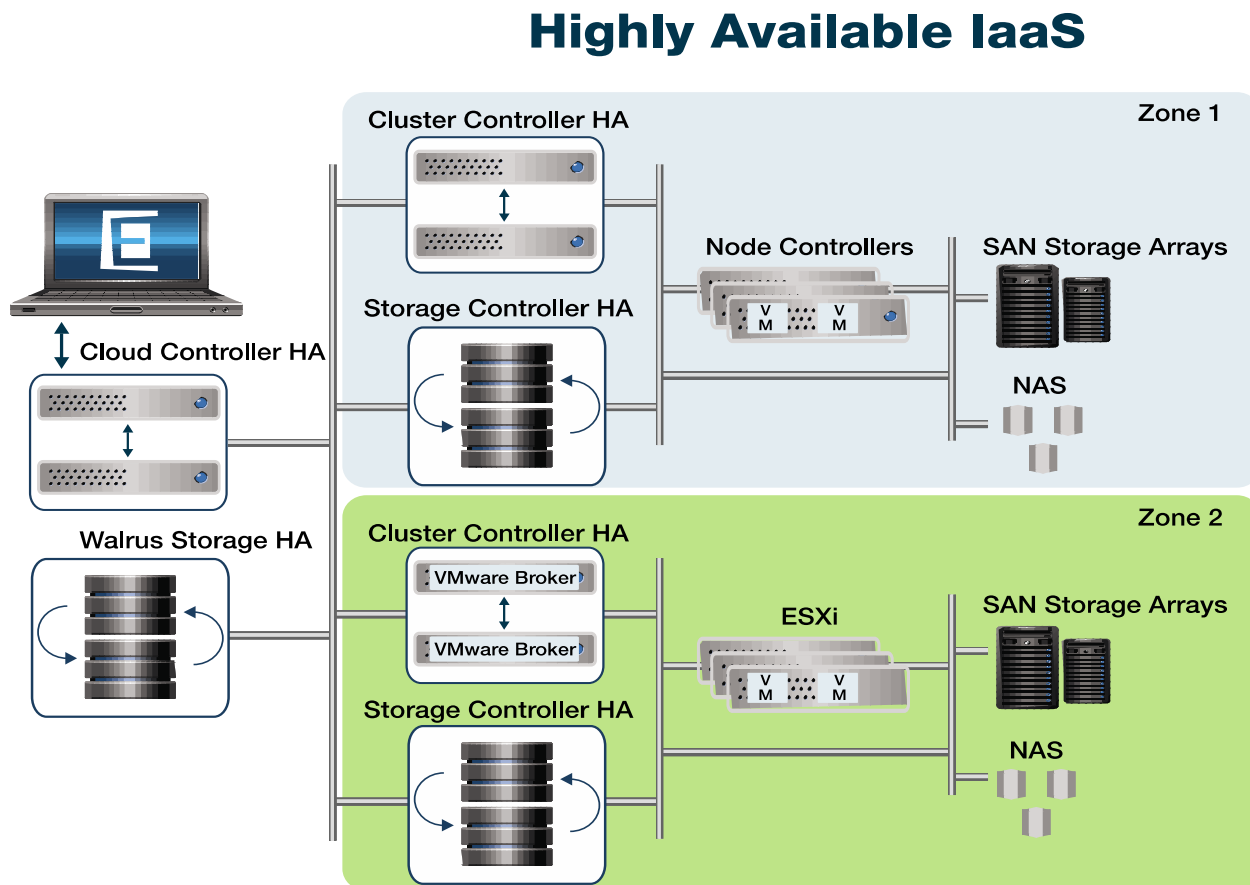
On-premise and Hybrid Cloud Infrastructure as a Service



Eucalyptus High Availability IaaS



- Prevent single point of failure from disrupting Eucalyptus service
- Detection of failure(s) with cloud administrator notification
- Automated Eucalyptus service component failure recovery
- No change required to support applications



Agile Development Cloud

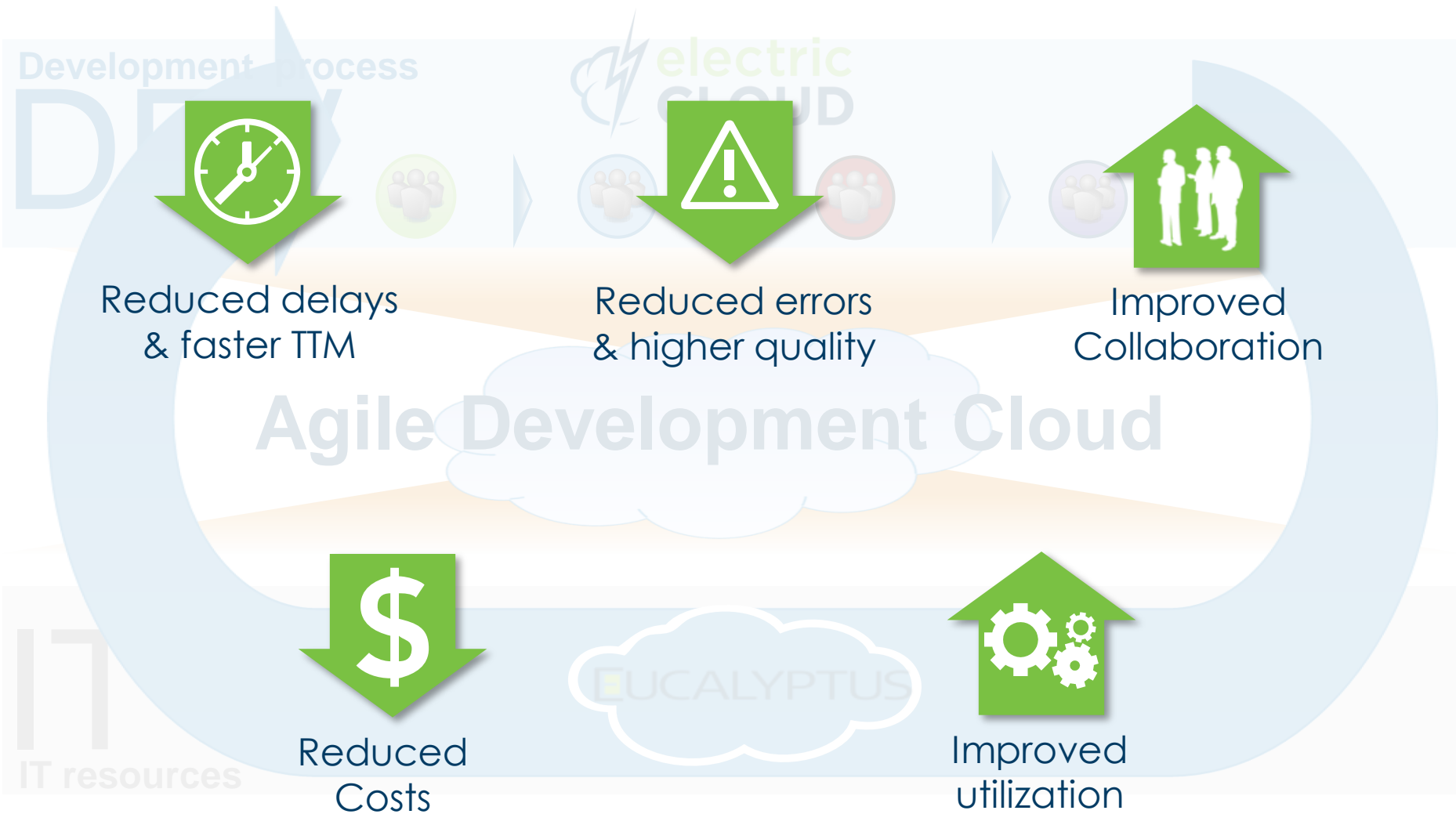
Automates end-to-end process & resources



Agile Development Cloud



Benefits of the Agile Development Cloud



Putting It Together



- Today's development process is complex
 - Many teams, tools, processes
 - Resources with limitless scale, agility
- Eucalyptus and Electric Cloud offer an Agile Development Cloud
 - Best in class Cloud IaaS solution
 - Automate your dev (B-T-D) process
 - Automate resources with process context
- Proven solution with measurable ROI

Demo

 EUCALYPTUS

Active Requirements

HP ALM Requirement ID	Current State	Reports	Last Jobs	Actions
367	QA REVIEW	Workflow	CI-7602-BuildAndTest-466-201109231439 SetupWorkflow-94-201109231437	Approve QA deploy
143	QA REVIEW	Workflow	Deploy-45-201109200946 CI-6916-BuildAndTest-428-201109200944 SetupWorkflow-83-201109200942	Approve
136	DEVELOP	Workflow	SetupWorkflow-77-201109191007	
150	OPS DEPLOY	Workflow	Deploy-37-201109191006 Deploy-36-201109191004 CI-6658-BuildAndTest-407-201109191002 SetupWorkflow-76-201109190959	

Traceability Report: Requirements <=> Artifacts <=> Deployments

Requirement	Artifact	Deployment	Date	User	Workflow
143	MercuryTours:App:1.0.0-6914	QA: 6917	2011-09-20T16:47:02.301Z	dev	Rel10.5-Cycle1-ReqID143-201109200942-138
150	MercuryTours:App:1.0.0-6657	QA: 6659	2011-09-19T17:05:07.782Z	dev	Rel10.5-Cycle1-ReqID150-201109190959-132
		PROD:6661	2011-09-19T17:06:12.736Z	dev	Rel10.5-Cycle1-ReqID150-201109190959-132

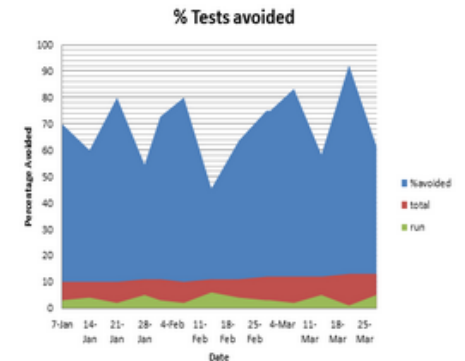
CI Dashboard

Projects: [CI Dash 1](#)

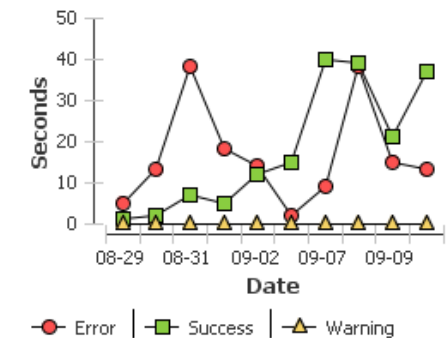
Configuration	Status	Current Build Progress	Recent Runs	Recent Success Ratio	Last Green
Main Branch	✓		■ ■ ■ ■ ■ ■ ■ ■	100%	■
R1 Branch	✓		■ ■ ■ ■ ■ ■ ■ ■	100%	■
R2 Branch	✓		■ ■ ■ ■ ■ ■ ■ ■	80%	■
R3 Branch	✓		■ ■ ■ ■ ■ ■ ■ ■	100%	■
R4 Branch	⚠		■ ■ ■ ■ ■ ■ ■ ■	60%	■

Reports

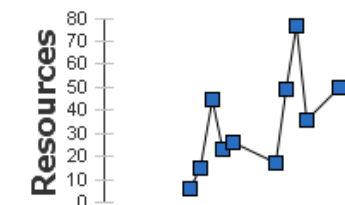
Test Avoidance Trend



Build and test outcome trend



Resource Utilization



Project: ALM

Workflow Definition Details – Lifecycle



Run



Edit



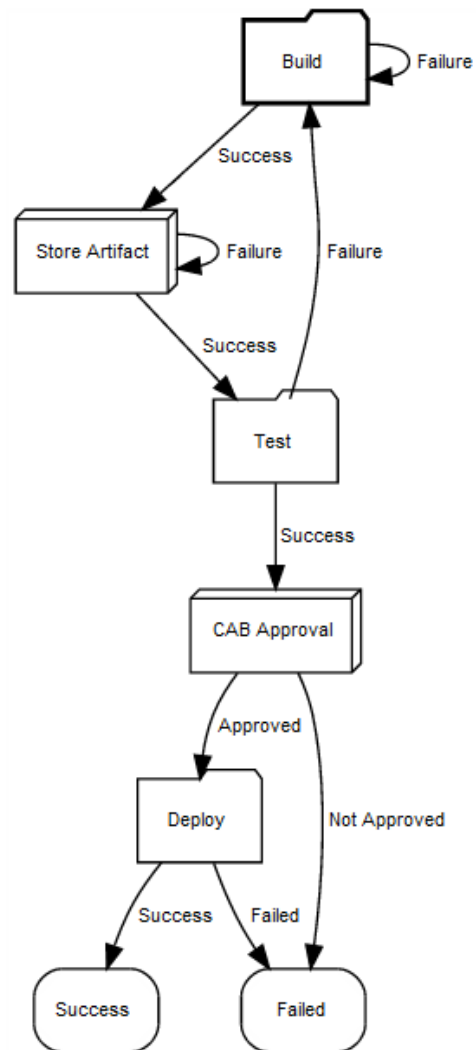
Access Control



State Definitions

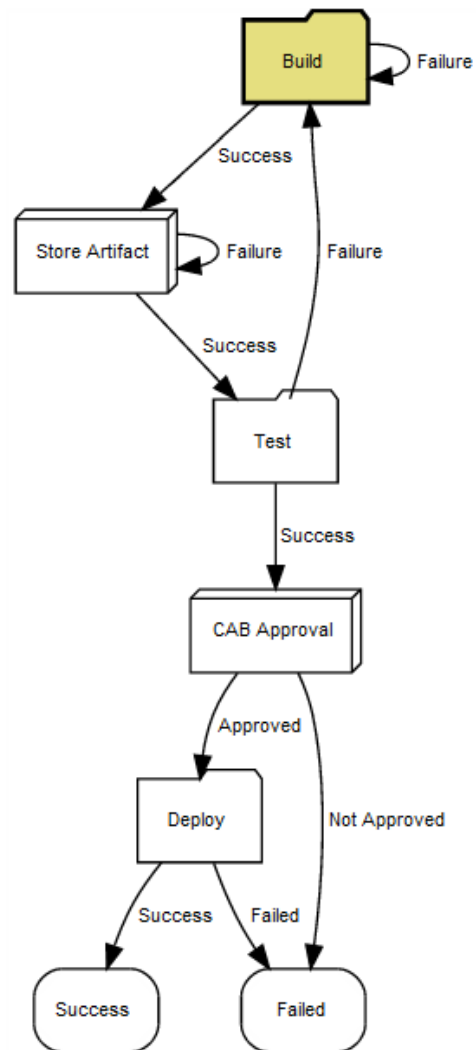
Properties

Graph



Project: [ALM](#)

Workflow Definition Details – Lifecycle

[Run](#) [Edit](#) [Access Control](#)[State Definitions](#)[Properties](#)**[Graph](#)**

Project: ALM

Workflow Definition Details – Lifecycle



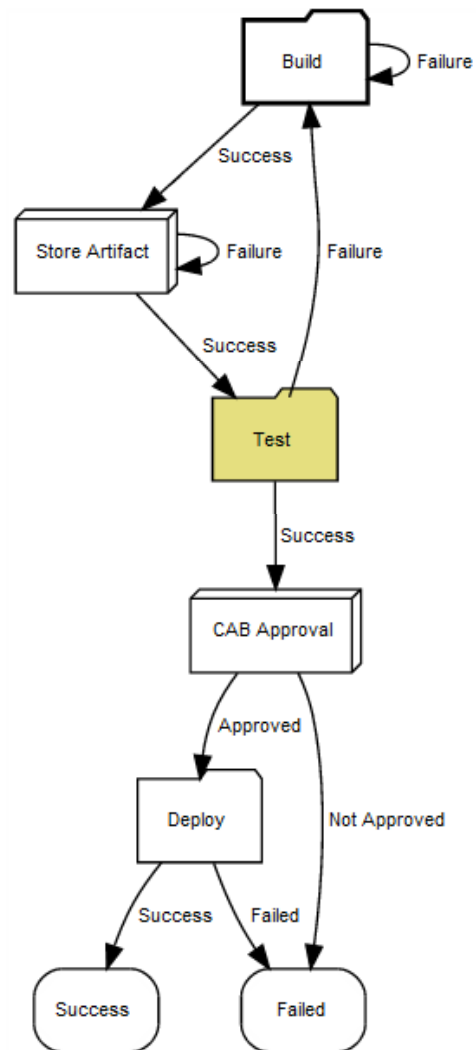
Run Edit Access Control



State Definitions

Properties

Graph



Project: ALM

Workflow Definition Details – Lifecycle



Run



Edit



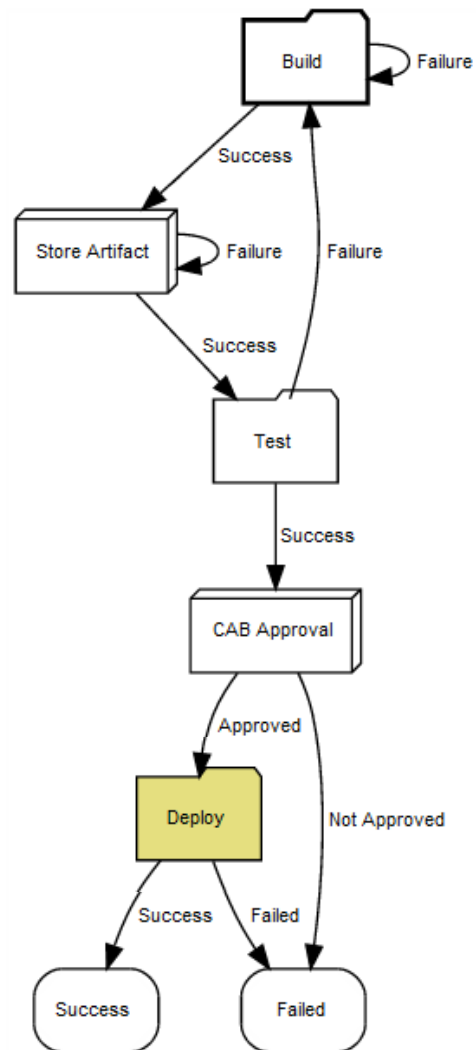
Access Control



State Definitions

Properties

Graph



Project: ALM

Workflow Definition Details – Lifecycle



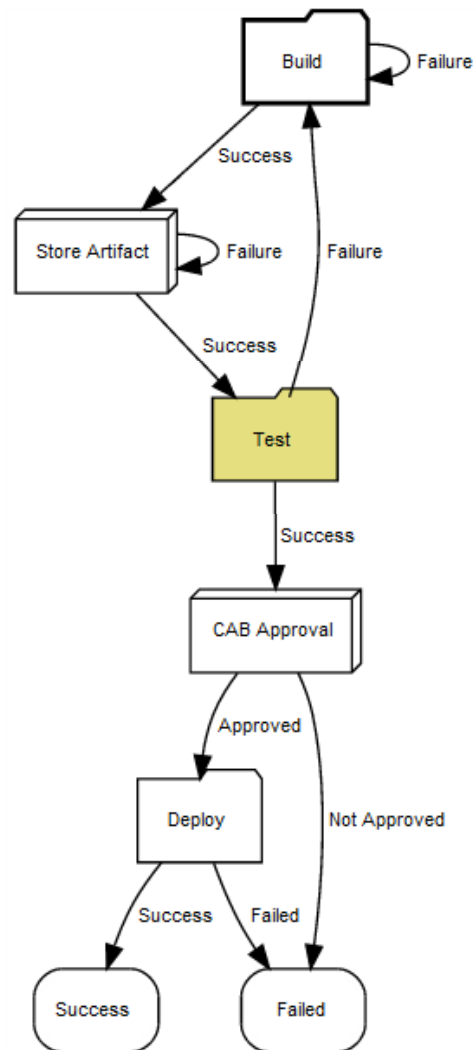
Run Edit Access Control



State Definitions

Properties

Graph



Project: ALM

Workflow Definition Details – Test



Run



Edit



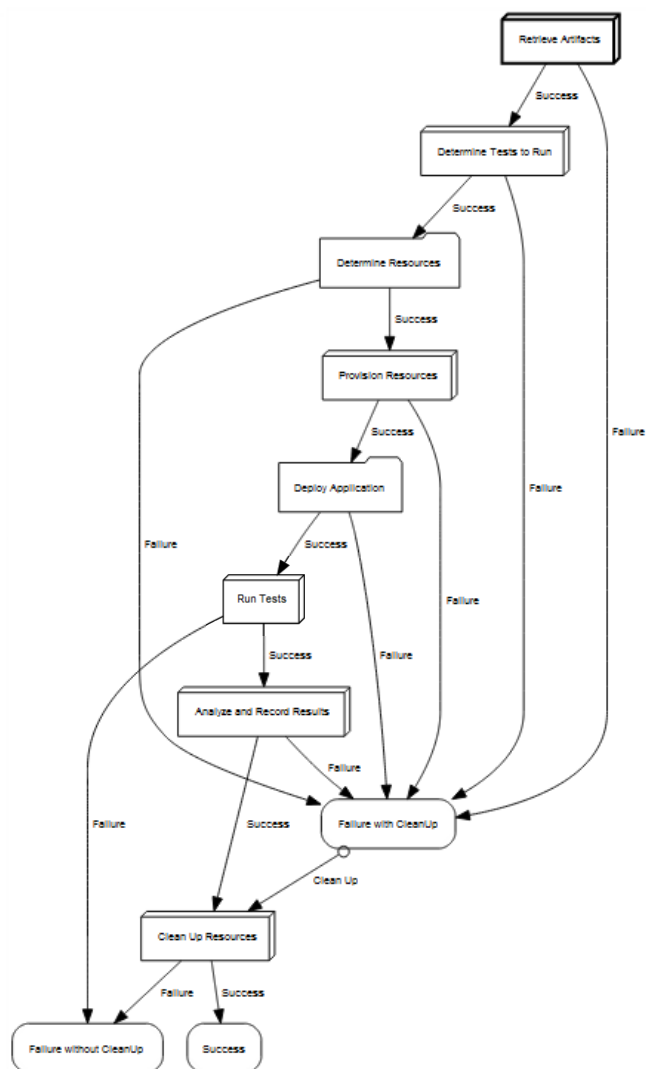
Access Control



State Definitions

Properties

Graph



Project: ALM

Workflow Definition Details – Test



Run ▾



Edit

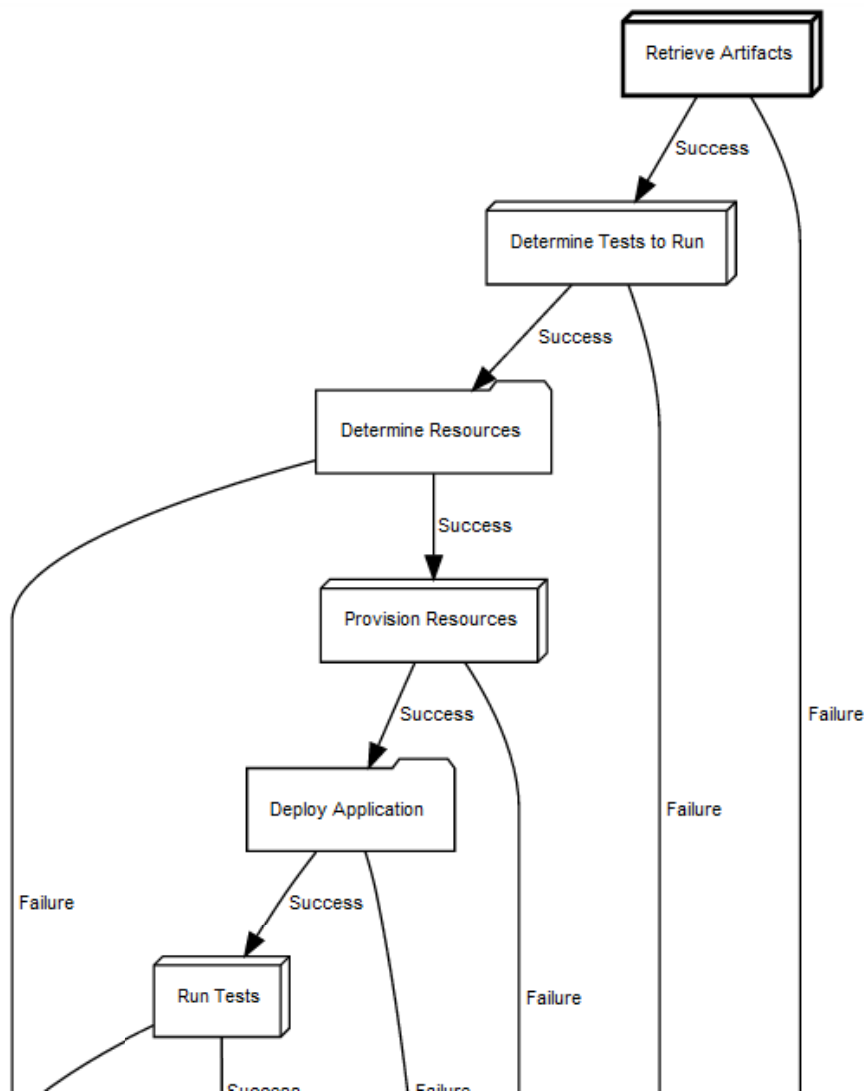


Access Control



State Definitions

Properties

Graph

Project: ALM

Workflow Definition Details – Test



Run ▾



Edit

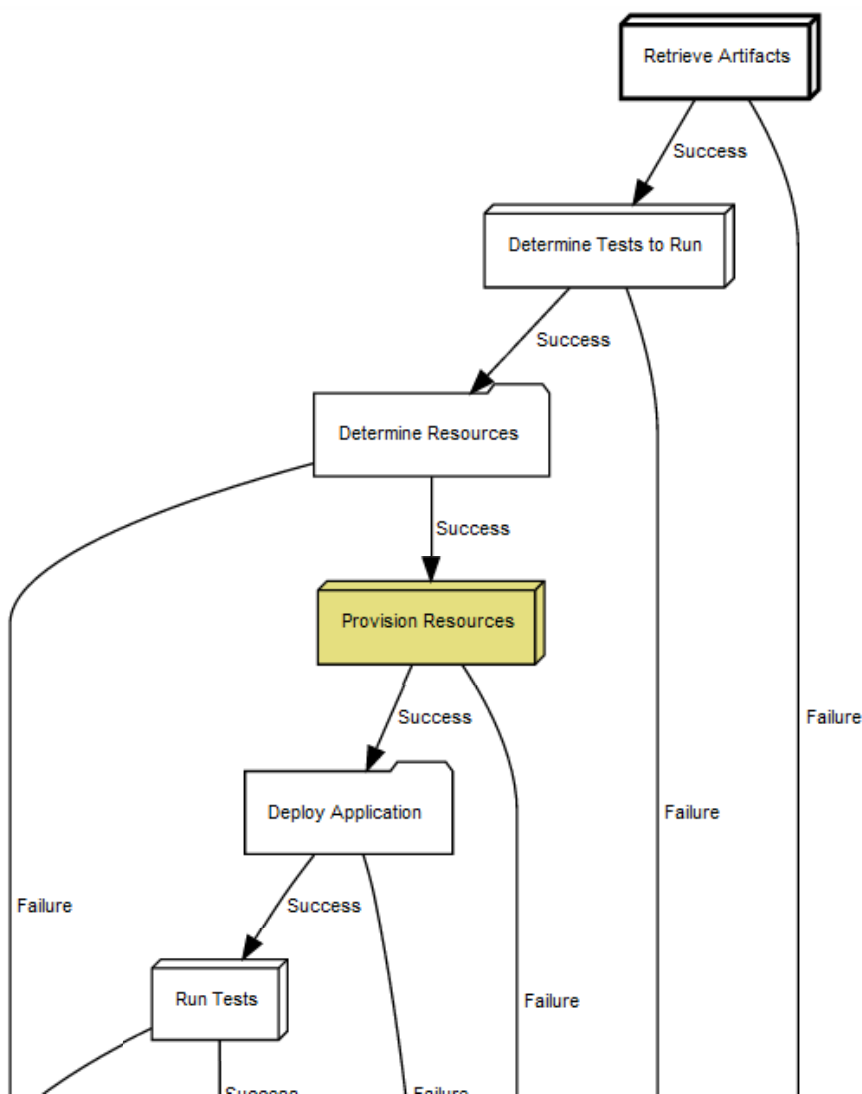


Access Control



State Definitions

Properties

Graph

Job Details – Test-477-201109231724[Run Again](#) [Delete](#) [Save Configuration](#) [Access Control](#) [View Log](#) [Star](#) [Refresh](#) [Previous](#) 29/500 [Next](#)**Running with Success**

Start Time: 2011-09-26 08:00:03 PDT

Elapsed Time: 02:40:51.523

General InformationProject: [ALM](#)Procedure: [Test](#)Schedule: [Test - Continuous Integration](#)Launched by: [admin](#)Priority: [normal](#)**Steps**[Diagnostics](#)[Parameters](#)[Properties](#)[Notifiers](#)[Published Artifact Versions](#)[Retrieved Artifact Versions](#)View: [All](#) ▼[Expand All](#) | [Collapse All](#)

Step Name	Log	Status	Elapsed Time	Resource	Actions
Provision Test Resources From Public Cloud		Success	00:00:09.891		Edit
Derive Resource Pool		Provision from Private Cloud (Eucalyptus EC2)	00:00:03.422	vm_win7_32b_1	Edit
Provision Resource From Cloud		Provisioning hosts. . .	00:00:02.781	vm_win7_32b_1	Edit
Configure Resource		Configuring resources for testing	00:00:03.328	vm_win7_32b_1	Edit

User Settings

Images

Instances

Volumes

Snapshots




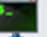






Key Pairs










Security Groups

Elastic IPs

SDB Items

Storage

☐ ☐ | Actions:      Filters: Select Zone Select State Select Image ID [Show More Filters](#)   |   

	Region 	Instance Id 	Image Id 	Type 	Zone 	State 	Public 	Launch Time 	Running Hours 
<input type="checkbox"/>	Eucalyptus	i-322C05D4	emi-8A1119CC	c1.medium	dev/test	pending	euca-0-0-0-0.eucalyptus.eucasys.com	2011-09-23 16:57:58 CDT	0
<input type="checkbox"/>	Eucalyptus	i-4284077E	emi-8A1119CC	c1.medium	dev/test	pending	euca-0-0-0-0.eucalyptus.eucasys.com	2011-09-23 16:57:58 CDT	0

User Settings

Images

Instances

Volumes

Snapshots




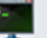






Key Pairs










Security Groups

Elastic IPs

SDB Items

Storage

☐ ☐ | Actions:      Filters: Select Zone Select State Select Image ID [Show More Filters](#)   |   

	Region 	Instance Id 	Image Id 	Type 	Zone 	State 	Public 	Launch Time 	Running Hours 
<input type="checkbox"/>	Eucalyptus	i-322C05D4	emi-8A1119CC	c1.medium	dev/test	running	euca-173-205-188-132.eucalyptus.eucasys.com	2011-09-23 16:57:58 CDT	1
<input type="checkbox"/>	Eucalyptus	i-4284077E	emi-8A1119CC	c1.medium	dev/test	running	euca-173-205-188-134.eucalyptus.eucasys.com	2011-09-23 16:57:58 CDT	1

Project: ALM

Workflow Definition Details – Test



Run ▾



Edit

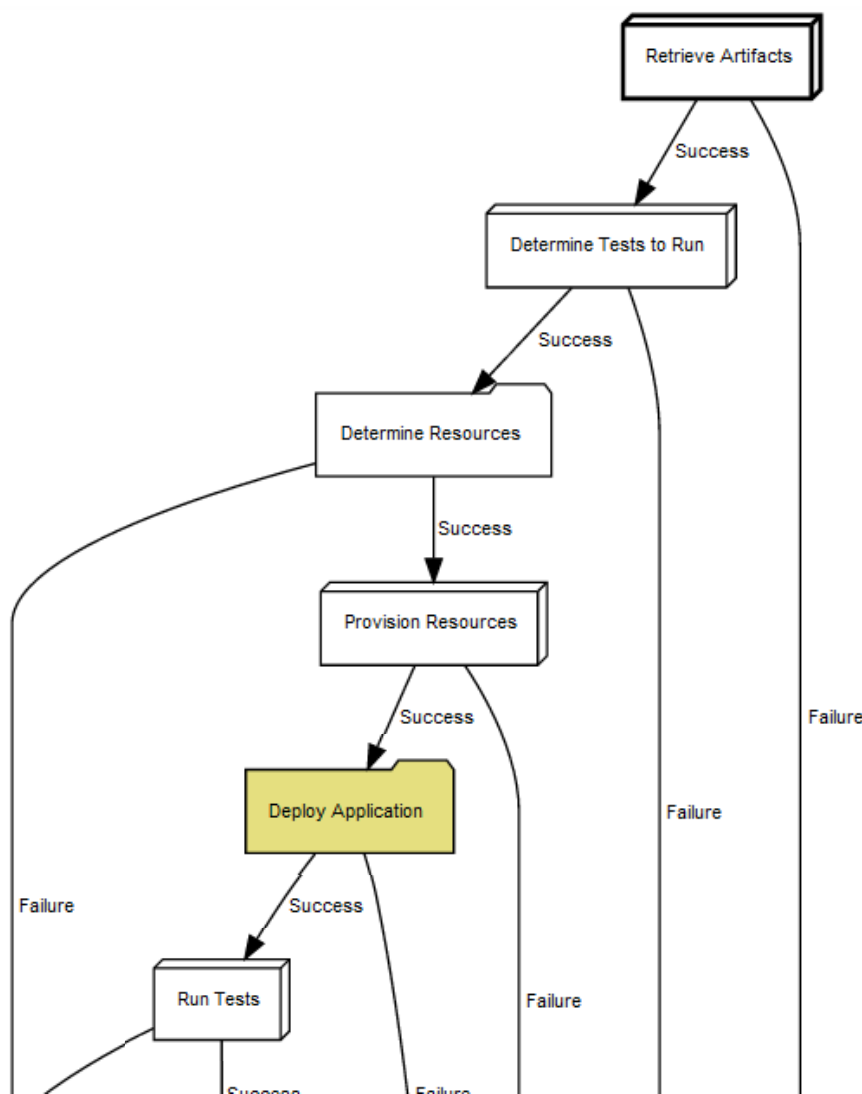


Access Control



State Definitions

Properties

Graph

Job Details – Deploy-51-201109210925

[Run Again](#) [Delete](#) [Save Configuration](#) [Access Control](#) [View Log](#) [Star](#) [Refresh](#) [Previous](#) 120/500 [Next](#)

Running with Success

Start Time: 2011-09-21 09:25:31 PDT

Elapsed Time: 00:00:25.422

General Information

Project [ALM](#)Procedure: [Deploy](#)Launched by: project: [ALM](#)

Priority: normal

Steps

[Diagnostics](#)[Parameters](#)[Properties](#)[Notifiers](#)[Published Artifact Versions](#)[Retrieved Artifact Versions](#)View: All [View](#)[Expand All](#) | [Collapse All](#)

Step Name	Log	Status	Elapsed Time	Resource	Actions
Deploy		✓ Success	00:00:03.203	vm_win7_32t	Edit
Get Artifacts		✓ Success	00:00:09.110		Edit
Retrieve Artifact Version		✓ Success	00:00:09.063	vm_win7_32t	Edit
Configure Database		✓ Success	00:00:00.735		Edit
Copy SQL Files		✓ Success	00:00:00.110	vm_win7_32t	Edit
Validate and Apply		✓ Success	00:00:00.437	vm_win7_32t	Edit
Configure Application Server		✓ Success	00:00:00.953		Edit
Confirm/Configure Application Server Data Sources		✓ Success	00:00:00.203	vm_win7_32t	Edit
Configure Application Server		✓ Success	00:00:00.156	vm_win7_32t	Edit
Install Application		✓ Success	00:00:00.110	vm_win7_32t	Edit
Configure Web Servers		⌂ Configuring Servers	00:00:00.125	vm_win7_32t	Edit
Configure Load Balancers		⌂ Configuring Balancers	00:00:00.094	vm_win7_32t	Edit

Records per page: 100 [View](#)1 thru 13 of 13 [Previous](#) [Next](#) [First](#) [Last](#)

Project: [ALM](#)

Workflow Definition Details – Test



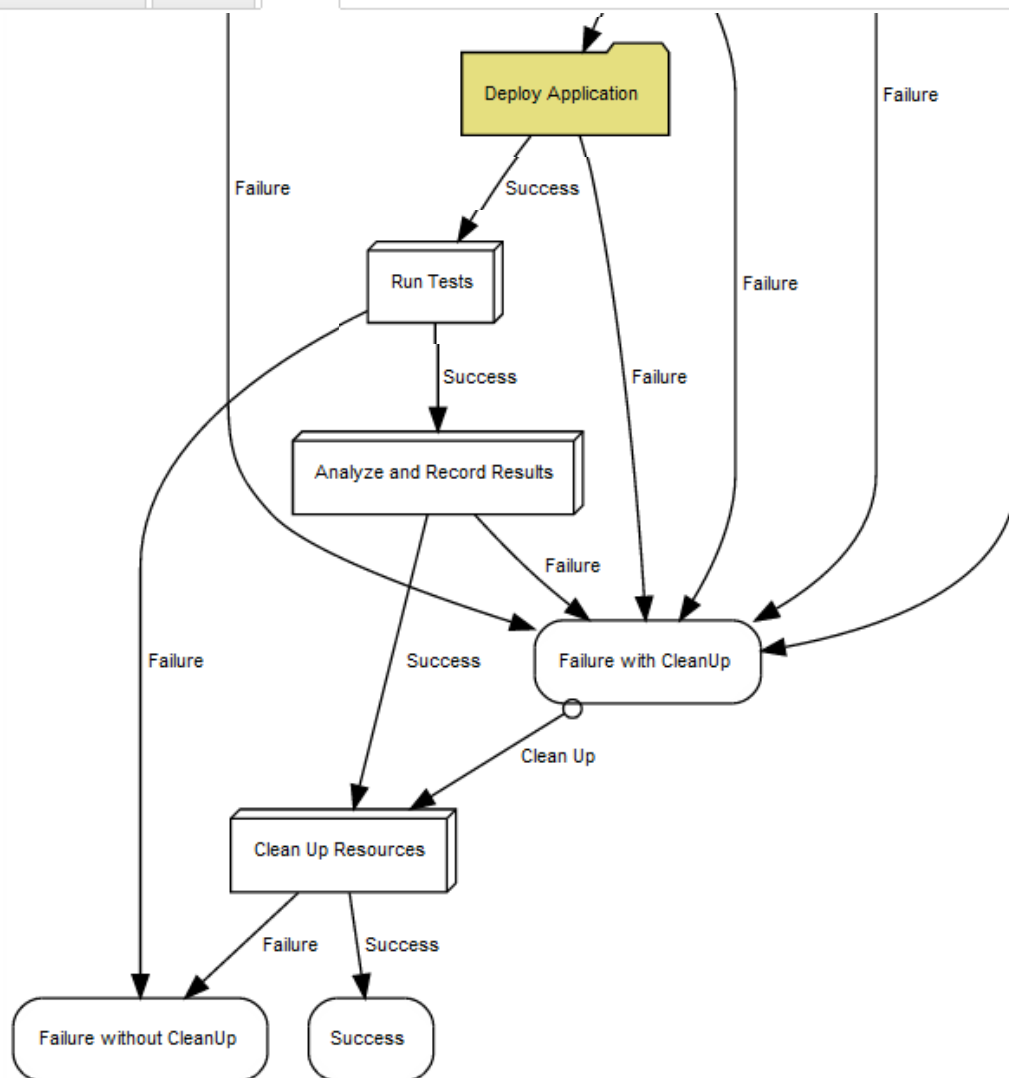
Run ▾



Edit



Access Control

[State Definitions](#)[Properties](#)**[Graph](#)**

Project: ALM

Workflow Definition Details – Test



Run ▾



Edit



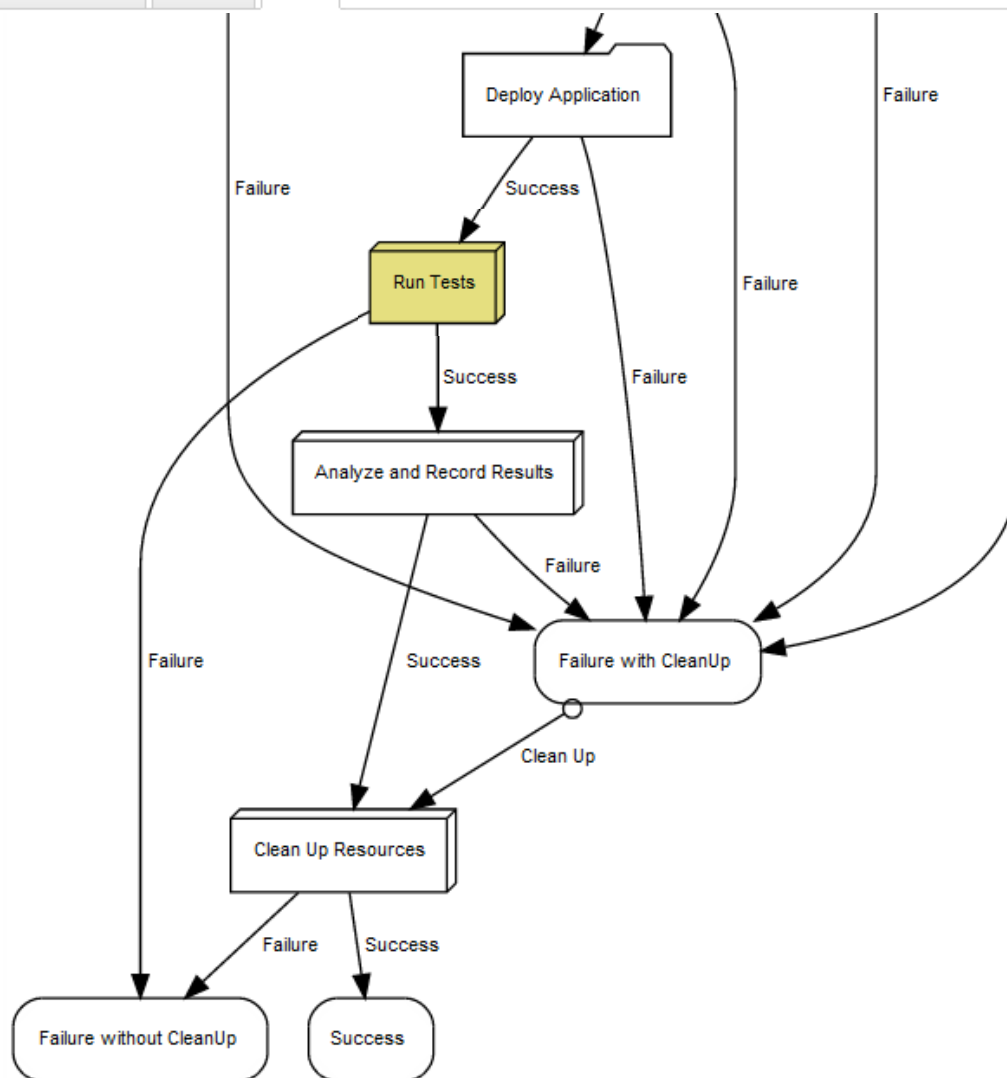
Access Control



State Definitions

Properties

Graph



Project: ALM

Workflow Definition Details – Test



Run ▾



Edit



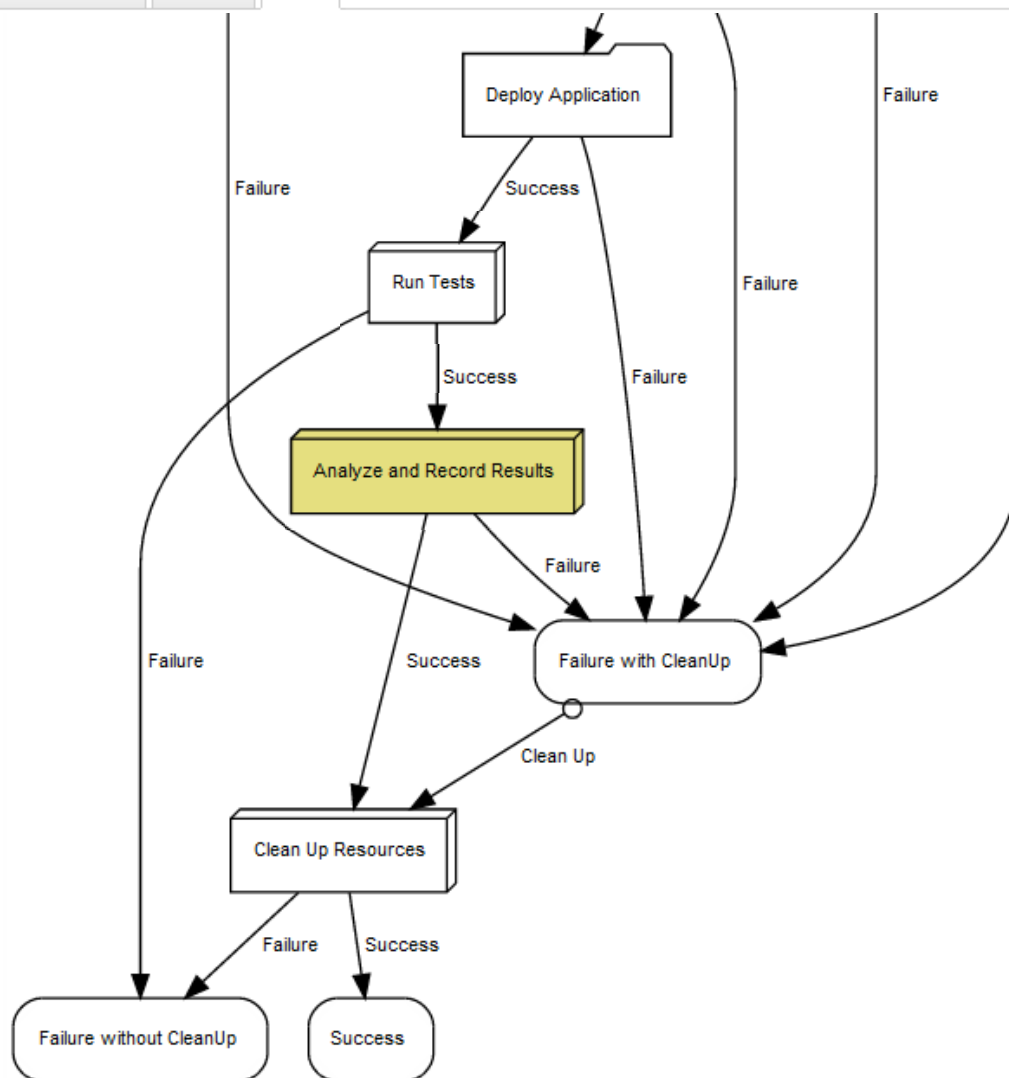
Access Control



State Definitions

Properties

Graph



Project: [ALM](#)

Workflow Definition Details – Test



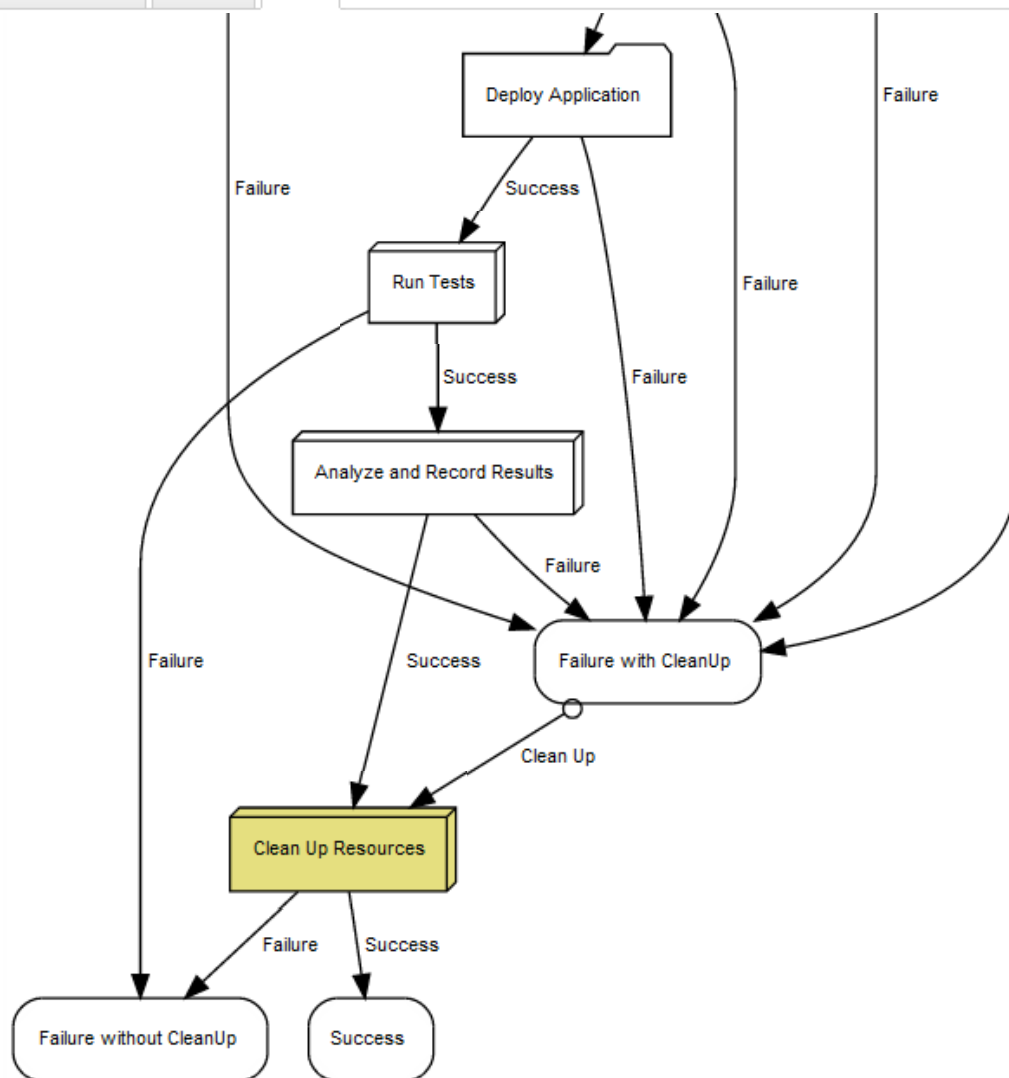
Run ▾



Edit



Access Control

[State Definitions](#)[Properties](#)**[Graph](#)**

User Settings

Images

Instances

Volumes

Snapshots











Key Pairs

Security Groups

Elastic IPs

SDB Items

Storage

☐ ☐ | Actions:      Filters: Select Zone Select State Select Image ID [Show More Filters](#)   |   

	Region 	Instance Id 	Image Id 	Type 	Zone 	State 	Public 	Launch Time 	Running Hours 
<input type="checkbox"/>	Eucalyptus	i-42F60893	emi-8A1119CC	m1.xlarge	dev/test	shutting-down	euca-173-205-188-132.eucalyptus.eucasys.com	2011-09-23 17:04:09 CDT	1
<input type="checkbox"/>	Eucalyptus	i-5D5809A9	emi-8A1119CC	c1.medium	dev/test	shutting-down	euca-173-205-188-134.eucalyptus.eucasys.com	2011-09-23 17:05:16 CDT	1

[illegible]

Project: ALM

Workflow Definition Details – Test



Run ▾



Edit



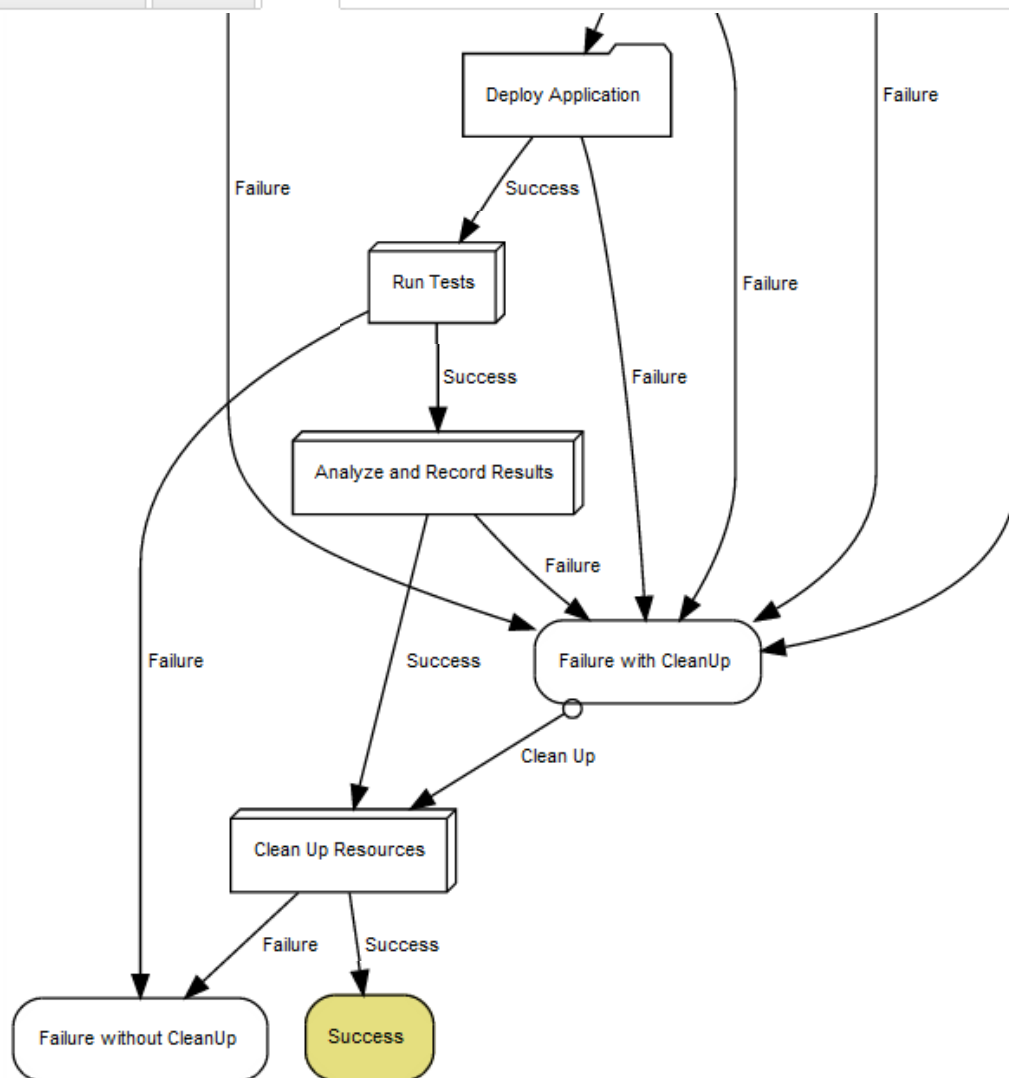
Access Control



State Definitions

Properties

Graph



Project: ALM

Workflow Definition Details – Lifecycle



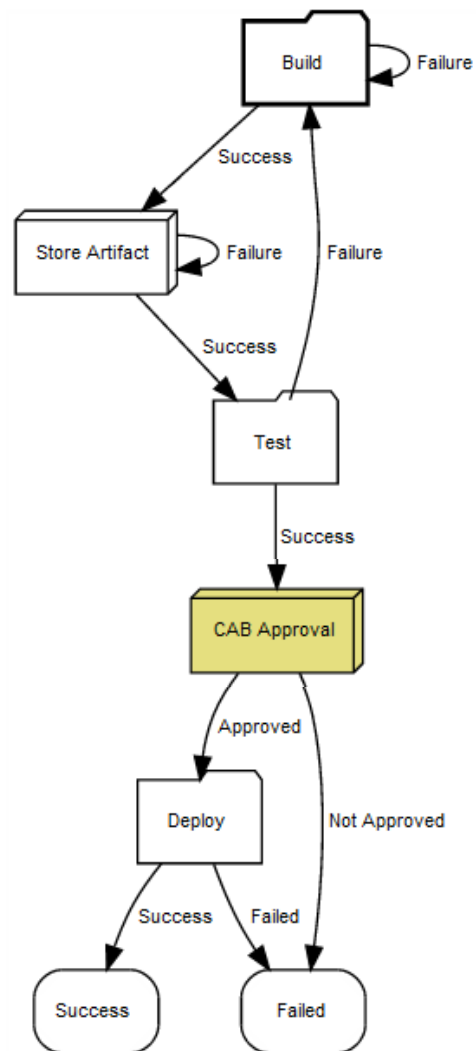
Run Edit Access Control



State Definitions

Properties

Graph



Project: ALM

Workflow Definition Details – Lifecycle



Run



Edit



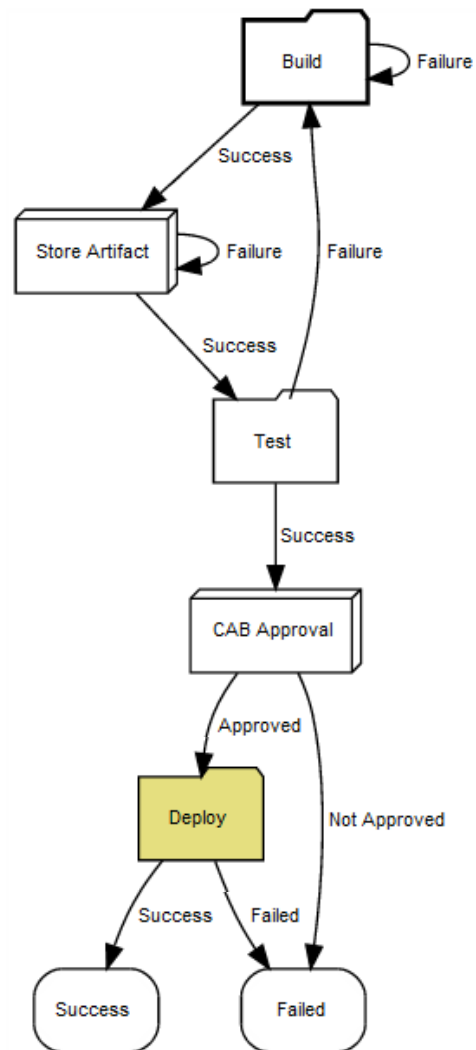
Access Control



State Definitions

Properties

Graph



User Settings

Images

Instances

Volumes

Snapshots

Key Pairs

Security Groups

Elastic IPs

SDB Items

Storage

☐ ☐ | Actions: Filters: Select Zone Select State Select Image ID [Show More Filters](#)

	Region	Instance Id	Image Id	Type	Zone	State	Public	Launch Time	Running Hours
<input type="checkbox"/>	Eucalyptus	i-3DB707BF	emi-8A1119CC	m1.small	prod	running	euca-173-205-188-132.eucalyptus.eucasys.com	2011-09-23 17:13:23 CDT	1
<input type="checkbox"/>	Eucalyptus	i-3E020690	emi-8A1119CC	m1.small	prod	pending	euca-173-205-188-137.eucalyptus.eucasys.com	2011-09-23 17:13:23 CDT	1
<input type="checkbox"/>	Eucalyptus	i-41D20779	emi-8A1119CC	m1.small	prod	pending	euca-173-205-188-135.eucalyptus.eucasys.com	2011-09-23 17:13:23 CDT	1
<input type="checkbox"/>	Eucalyptus	i-4E1A08B2	emi-8A1119CC	m1.small	prod	pending	euca-173-205-188-138.eucalyptus.eucasys.com	2011-09-23 17:13:23 CDT	1
<input type="checkbox"/>	Eucalyptus	i-4E3608C3	emi-8A1119CC	m1.small	prod	running	euca-173-205-188-134.eucalyptus.eucasys.com	2011-09-23 17:13:23 CDT	1

User Settings

Images

Instances

Volumes

Snapshots

Key Pairs

Security Groups

Elastic IPs

SDB Items

Storage

☐ ☐ | Actions: Filters: Select Zone Select State Select Image ID [Show More Filters](#) |

	Region	Instance Id	Image Id	Type	Zone	State	Public	Launch Time	Running Hours
<input type="checkbox"/>	Eucalyptus	i-3DB707BF	emi-8A1119CC	m1.small	prod	running	euca-173-205-188-132.eucalyptus.eucasys.com	2011-09-23 17:13:23 CDT	1
<input type="checkbox"/>	Eucalyptus	i-3E020690	emi-8A1119CC	m1.small	prod	running	euca-173-205-188-137.eucalyptus.eucasys.com	2011-09-23 17:13:23 CDT	1
<input type="checkbox"/>	Eucalyptus	i-41D20779	emi-8A1119CC	m1.small	prod	running	euca-173-205-188-135.eucalyptus.eucasys.com	2011-09-23 17:13:23 CDT	1
<input type="checkbox"/>	Eucalyptus	i-4E1A08B2	emi-8A1119CC	m1.small	prod	running	euca-173-205-188-138.eucalyptus.eucasys.com	2011-09-23 17:13:23 CDT	1
<input type="checkbox"/>	Eucalyptus	i-4E3608C3	emi-8A1119CC	m1.small	prod	running	euca-173-205-188-134.eucalyptus.eucasys.com	2011-09-23 17:13:23 CDT	1

Active Requirements

HP ALM Requirement ID	Current State	Reports	Last Jobs	Actions
367	QA REVIEW	Workflow	CI-7602-BuildAndTest-466-201109231439 SetupWorkflow-94-201109231437	Approve QA deploy
143	QA REVIEW	Workflow	Deploy-45-201109200946 CI-6916-BuildAndTest-428-201109200944 SetupWorkflow-83-201109200942	Approve
136	DEVELOP	Workflow	SetupWorkflow-77-201109191007	
150	OPS DEPLOY	Workflow	Deploy-37-201109191006 Deploy-36-201109191004 CI-6658-BuildAndTest-407-201109191002 SetupWorkflow-76-201109190959	

Traceability Report: Requirements <=> Artifacts <=> Deployments

Requirement	Artifact	Deployment	Date	User	Workflow
143	MercuryTours:App:1.0.0-6914	QA: 6917	2011-09-20T16:47:02.301Z	dev	Rel10.5-Cycle1-ReqID143-201109200942-138
150	MercuryTours:App:1.0.0-6657	QA: 6659	2011-09-19T17:05:07.782Z	dev	Rel10.5-Cycle1-ReqID150-201109190959-132
		PROD:6661	2011-09-19T17:06:12.736Z	dev	Rel10.5-Cycle1-ReqID150-201109190959-132

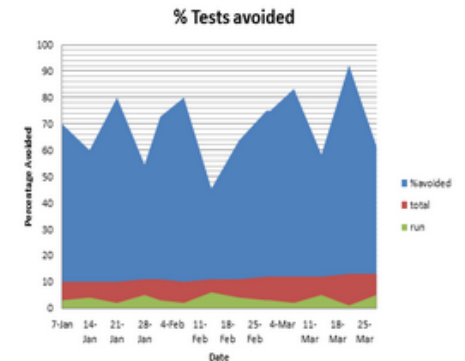
CI Dashboard

Projects: [CI Dash 1](#)

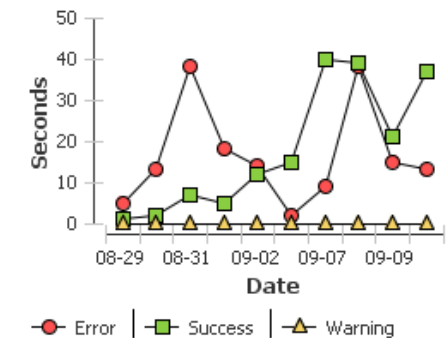
Configuration	Status	Current Build Progress	Recent Runs	Recent Success Ratio	Last Green
Main Branch	✓		■ ■ ■ ■ ■ ■ ■ ■	100%	■
R1 Branch	✓		■ ■ ■ ■ ■ ■ ■ ■	100%	■
R2 Branch	✓		■ ■ ■ ■ ■ ■ ■ ■	80%	■
R3 Branch	✓		■ ■ ■ ■ ■ ■ ■ ■	100%	■
R4 Branch	⚠		■ ■ ■ ■ ■ ■ ■ ■	60%	■

Reports

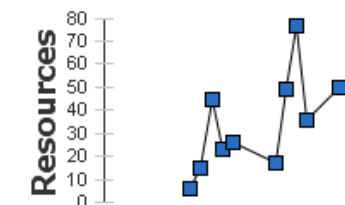
Test Avoidance Trend



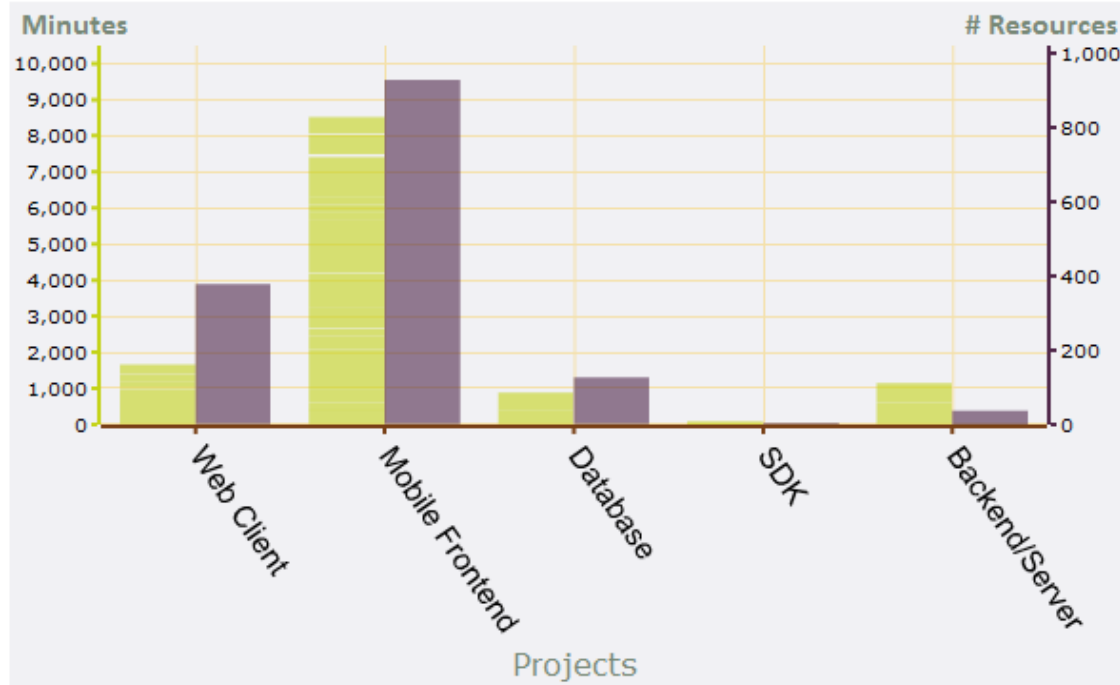
Build and test outcome trend



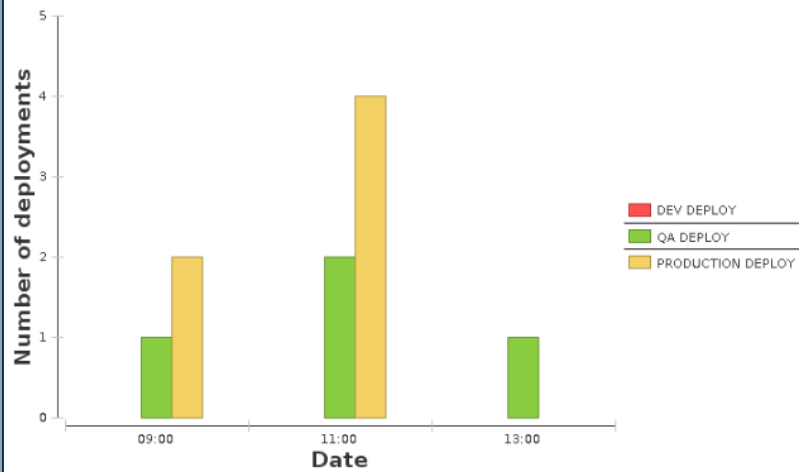
Resource Utilization



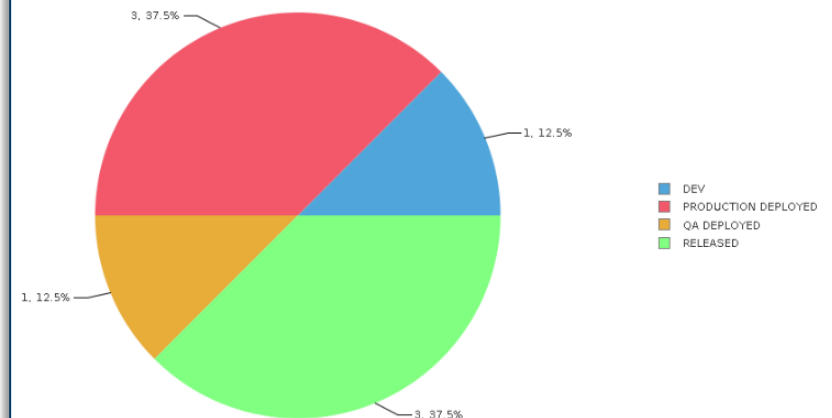
Resource usage



Deployments by environment



Active Galaxy PDC Workflow states



Electric Cloud enables Agile Development by:

1. Modeling/Mapping your Software Development Process
2. Enabling Automation of your Software Delivery Procedures
3. Reporting and Analyzing Process Execution and Workflow

Eucalyptus enables your Cloud Infrastructure by:

4. Defining Valuable Infrastructure Services
5. Planning and Standardizing the Cloud Platform
6. Planning and Architecting the Deployment

Electric Cloud/Eucalyptus Partnership makes your Agile Development Cloud by:

7. Integrating development process with infrastructure

Next Steps



Agile Development Cloud through Electric Cloud

Contact sales@electric-cloud.com for free consultation

Cloud Infrastructure through Eucalyptus

Contact sales@eucalyptus.com for free consultation