



Rapid Application Development with Bison Technology

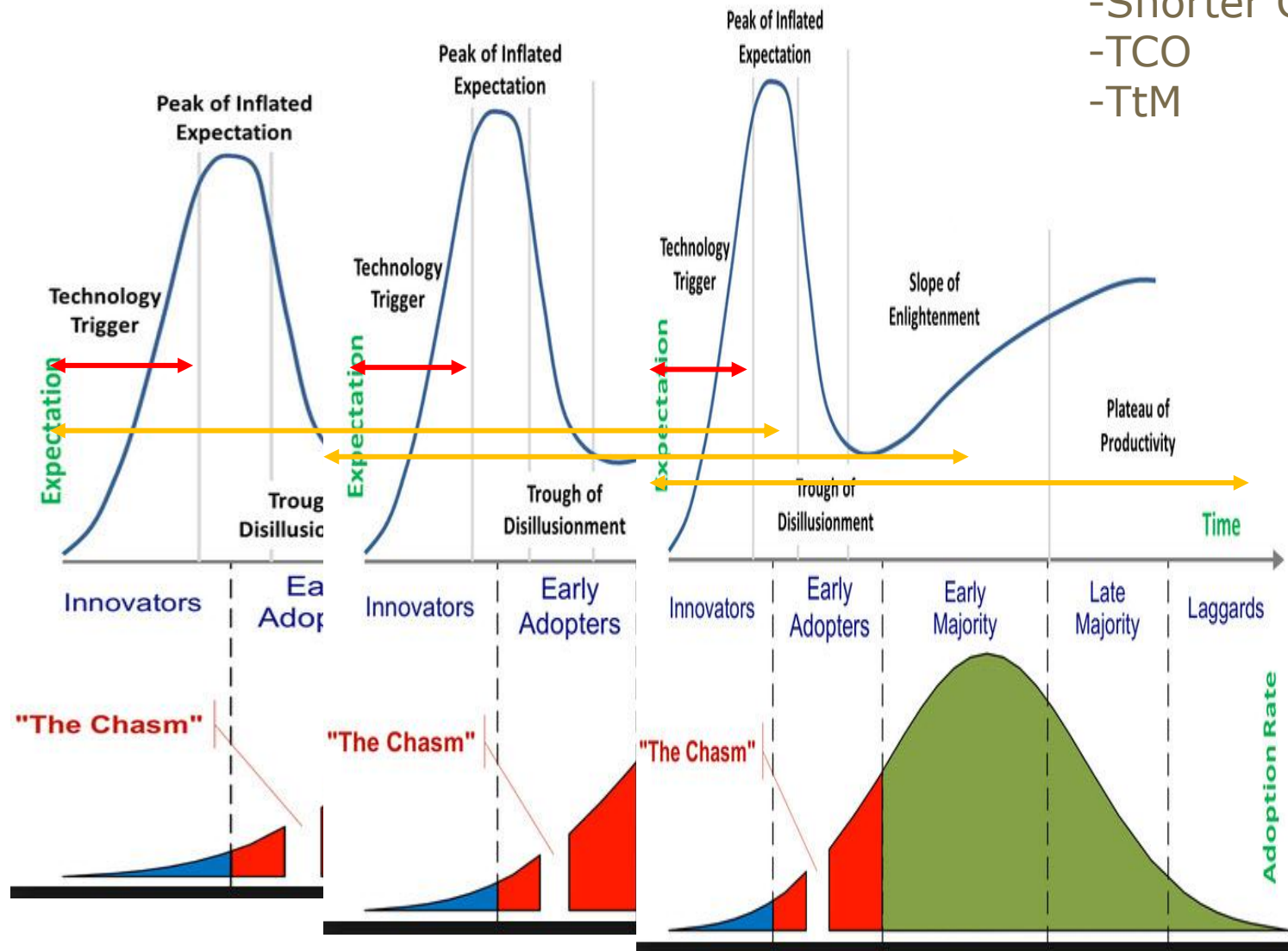
11.4.2013 Christof Oberholzer

***Why another business
software development
platform????***



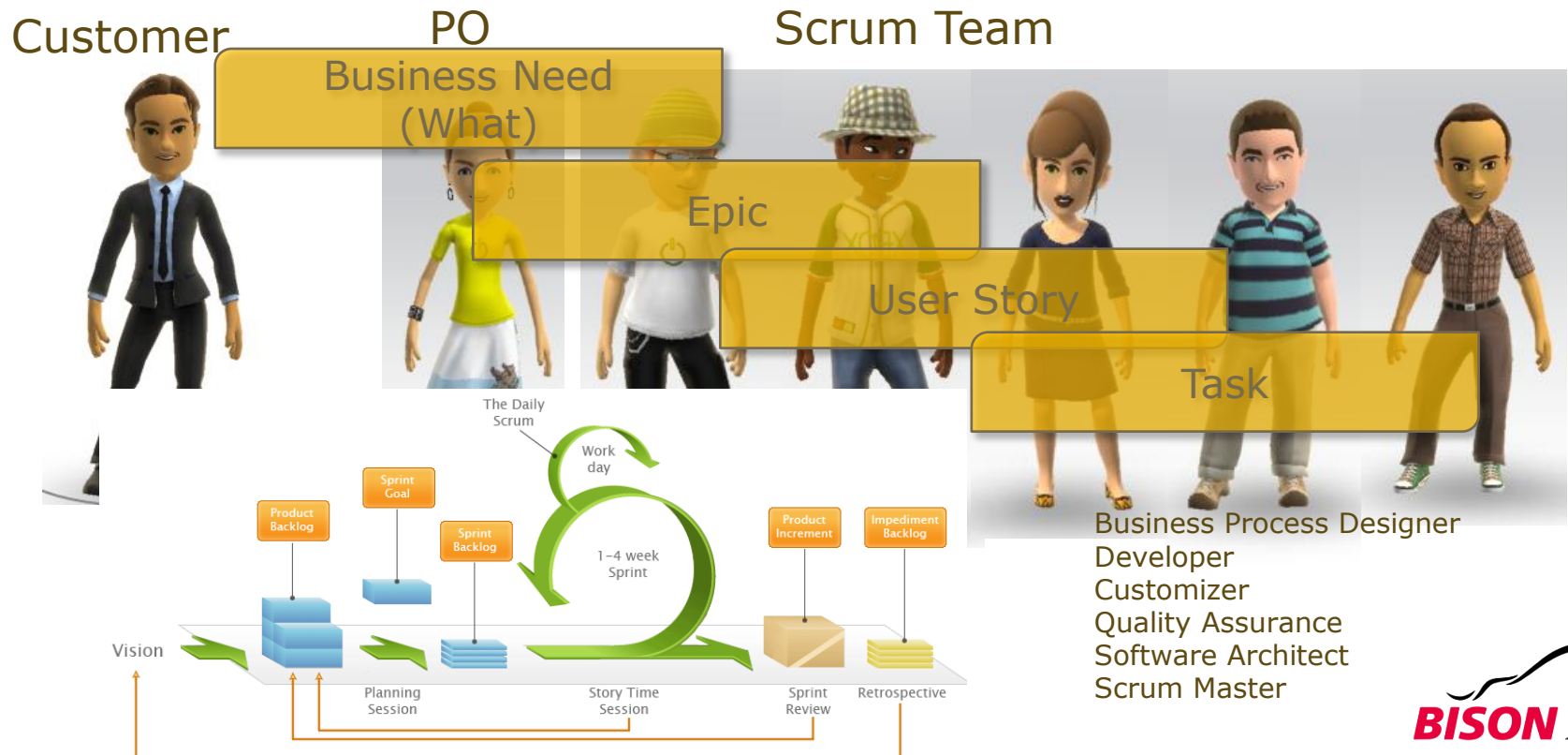
Faster, faster, more efficient, less costs, more features...

- Life Cycle Sample
- Shorter Cycle
- TCO
- TtM

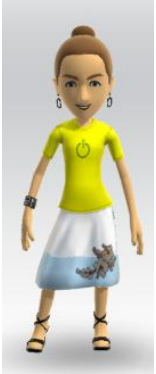


Complexity and Roles

Business Guy (Knows what) and Tech Guy (knows how), sometimes they understand each other sometimes not the first iteration ;-)



Complexity and Roles



General Questions

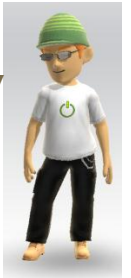
Are great business analysts good developers?

Do application developer know about hard core platform principles like JE, transactions, security, scalability...?

Do hard core platform developers understand business scenarios, data flow and orchestration?

Are Quality Managers very good at technology?

...



Of course there are! However quite often this is not the case...

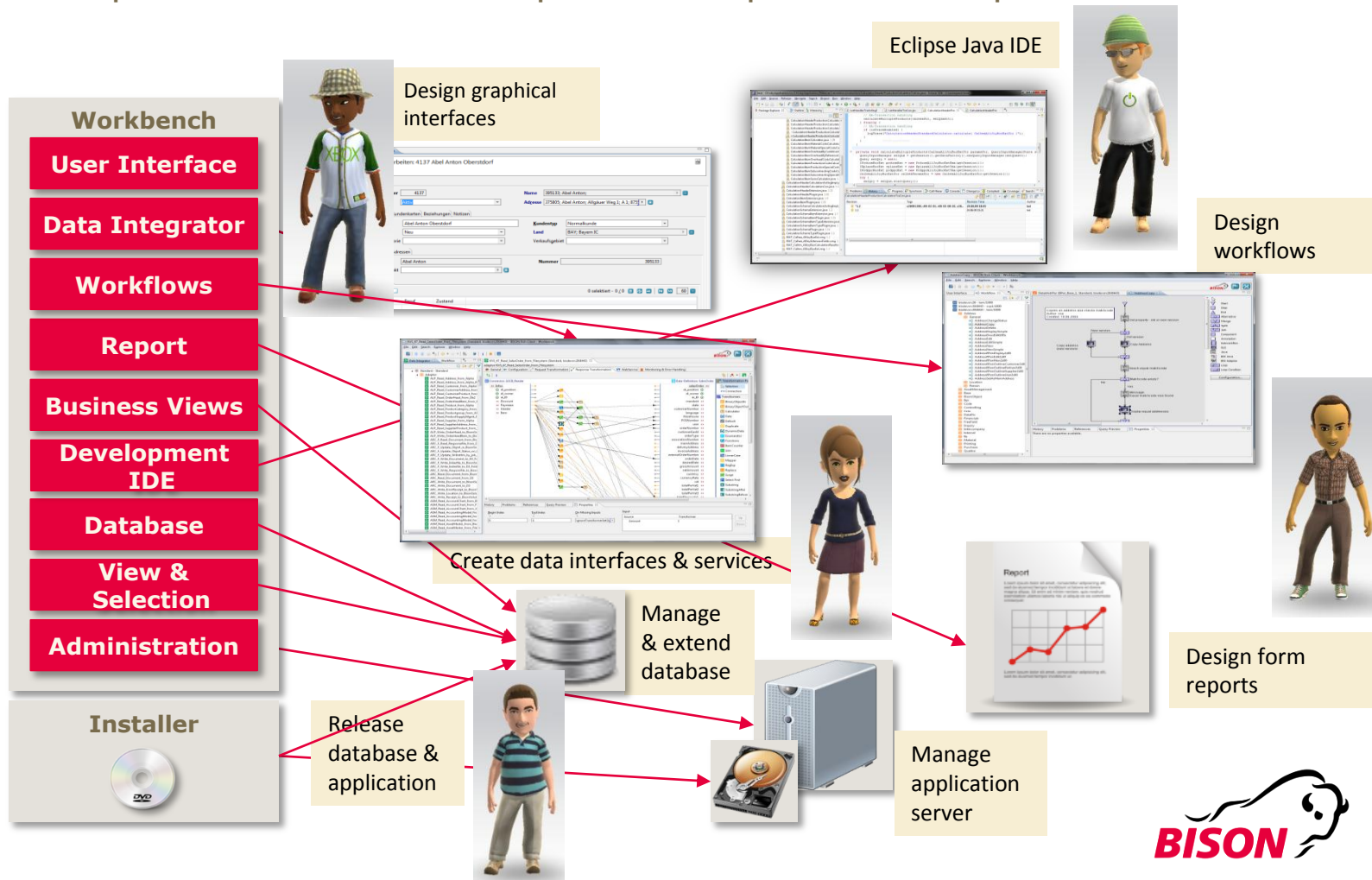
As a result if skillset is spread over many members the transfer of knowledge can be costly and depending on complexity it can take some time!

Therefore Bison Technology is enabling roles and skill set match as a fundamental principle for productivity and fun in a job.

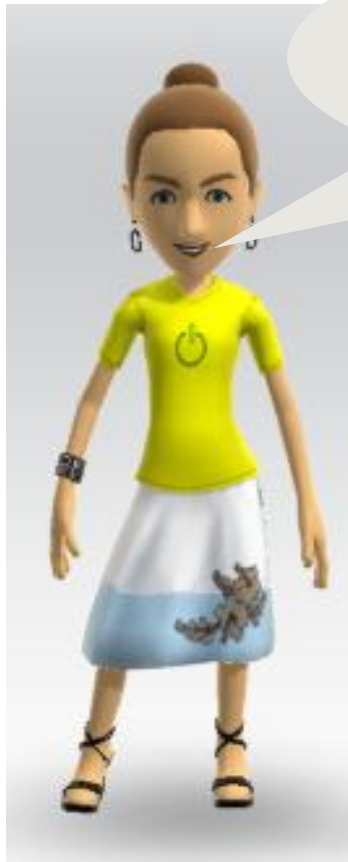


Complexity and Roles

How does the role and skillset allocation work using Bison Technology? Our Business Software Development Platform supports role specific tools as well as predefined platform components



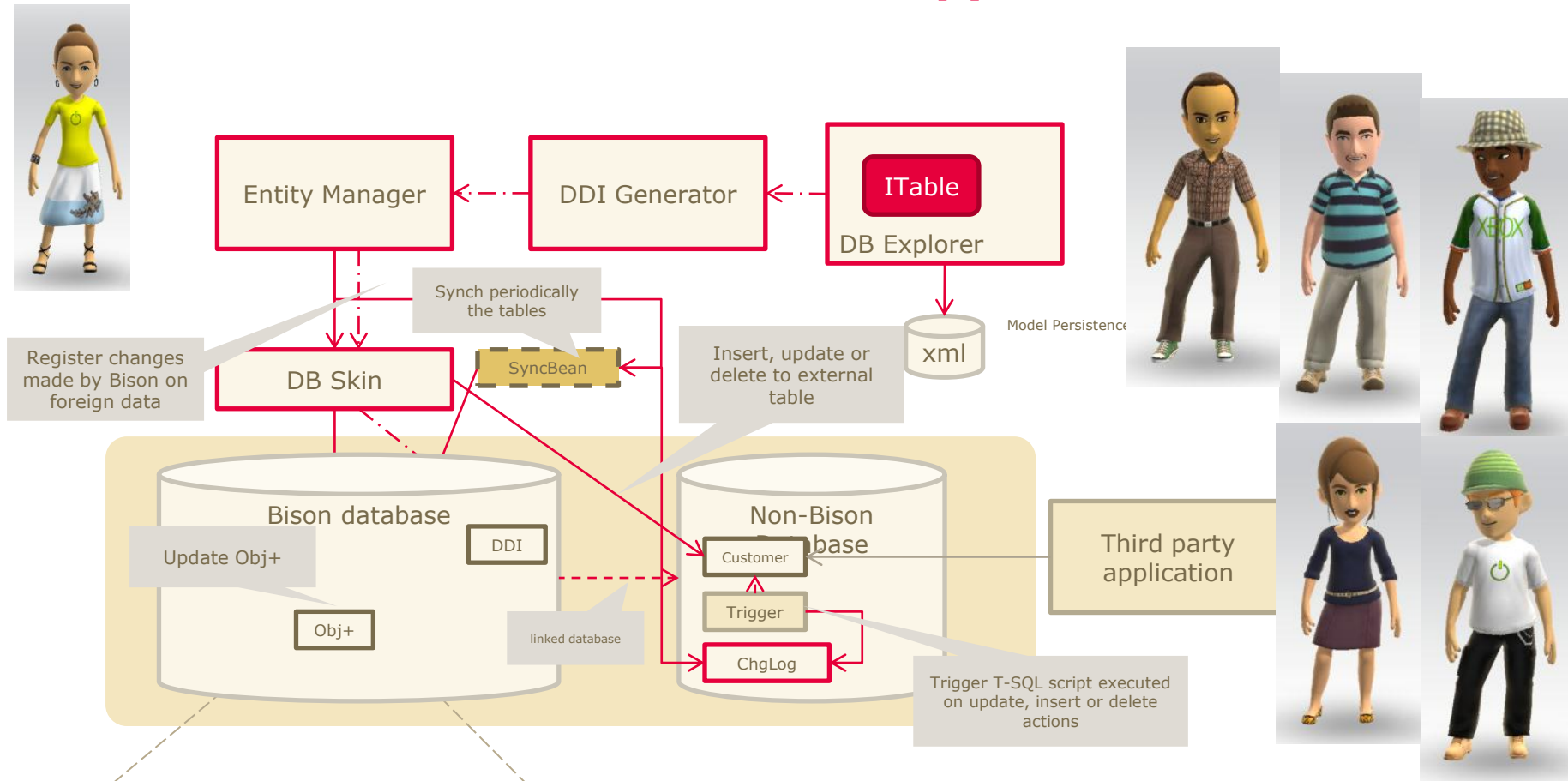
Bison Technology



**Let us take a closer look
to specific features of
Bison Technology**

Support for Forward and Reverse Engineering

Deal with external database – co existence of applications



obp#	obpchgcnt	obpForeignPK	obpForeignTable
hfhkdj	0	a13\10000	Kunde

Forward and Reverse Engineering

- Forward



- Reverse



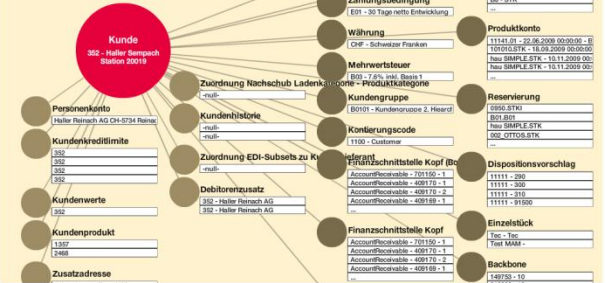
How is GUI design done?



Rich Client

Kundennummer		Name	
252		10001, Hal	
Adresse	34 Eichenstr. 2, 60528 Sempach (Basel)	Sachbearf	Haller Ren
Zustand	Aktiv	Währung	CHF Schw
Allgemein Zusatz: Familienk. Personenkto. Adressen Kontable Beschreibungswahl Kundenprodukt Kundenkonto Sortiments Kundenkategorie			
<div> <div>Kategorisierung</div> <div> <div>ABC_Klasse</div> <div>8</div> <div>Geschäftskanal</div> </div> </div>			
<div> <div>Kundengruppe</div> <div>00010 Kundengruppe 2: Filiale ohne Basis</div> <div>Kundenkategorie</div> </div>			
<div> <div>Verkaufskanalt</div> <div></div> <div>Vertriebsart</div> </div>			
<div> <div>Organisationseinheit</div> <div></div> <div>Sachbearbeiter</div> </div>			
<div> <div>Interne Kurzt.</div> <div></div> <div>Kundentyp</div> </div>			
<div> <div>Bestell- und Lieferbedingung</div> <div></div> <div>Normalbu</div> </div>			
<div> <div>Zahlungsbedingung</div> <div>001, 30 Tage netto Einweisung</div> <div>Zahlungsgang</div> </div>			
<div> <div>Bestellart</div> <div></div> <div>Lieferbedingung</div> </div>			
<div> <div>Versandart</div> <div></div> <div>F. Versand</div> </div>			
<div> <div>Preiscode</div> <div></div> <div>Land</div> </div>			
<div> <div>Packungsgang</div> <div></div> <div>Lieferprüfung</div> </div>			
<div> <div>Mehrwertsteuer</div> <div></div> <div>Keine Prüf</div> </div>			
<div> <div>MwSt-Code</div> <div>003 7.6% enkl. Basis 1</div> <div>MwSt-Nr.</div> </div>			
<div> <div>Firmennummer</div> <div>2</div> <div>100,206,30</div> </div>			
<div> <div>Bezeichnen</div> <div>Geschäftsbef. Einkauf Geschäftsbef. Verkauf Nachschub Lieferantenkto Sachbearbeiter Kategorie Ausnahmestatus Formuliertext</div> </div>			
<div> <div>Speichern</div> <div>Übersicht</div> </div>			
<div> <div>Speichern</div> <div>Übersicht</div> </div>			

Spider



Web Client

[illegible]

Mobile

Embedded

Available Products

- AUDI A3**
(CHF 30'450)
- AUDI A6**
(CHF 50'850)
- AUDI A6**
(CHF 40'850)
- AUDI A7**
(CHF 47'500)
- AUDI A8**
(CHF 67'500)
- AUDI S6**
(CHF 98'200)
- AUDI S8**
(CHF 148'050)

Buon Leasing

Berechnung

Name
AUDI A3

Nettopreis - CHF
30'450

Restwert - CHF
5000

Laufzeit - Mt.
☒ 12
 ☐ 24
 ☐ 36
 ☐ 48

Rate Berechnen

Leasing Rate (CHF/Mt)
1'134.27



GUI Design

- General GUI Design



- Rich and Web Client



- Win 8 Style

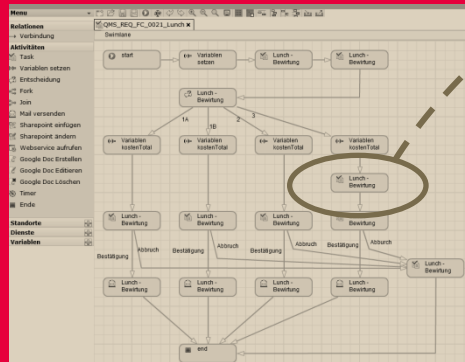


- Spider



Can you manage Business Orchestration and Technical Workflow the same tool and role?

BPI

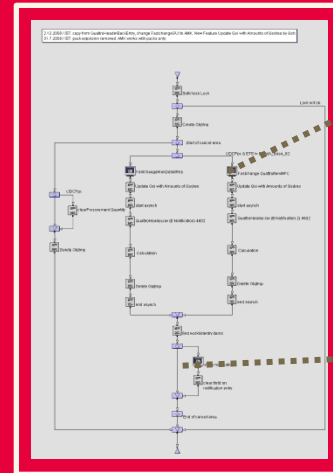


Service

Legacy System

Service

Bison Technology



Bison Technology Runtime



Business Process Orchestration

- BPI

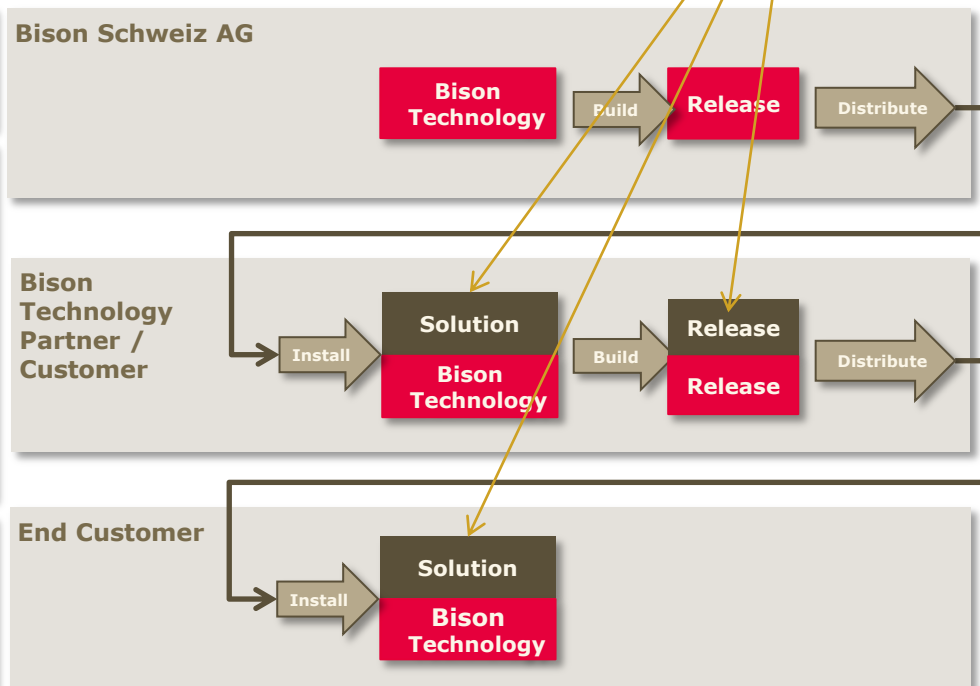
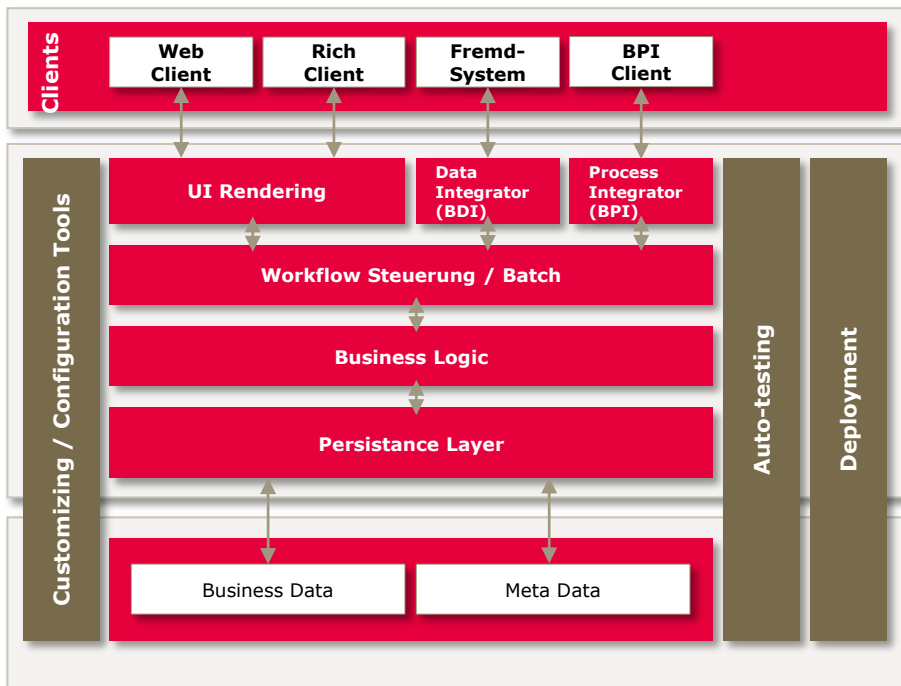


- Sample VoIP Integration

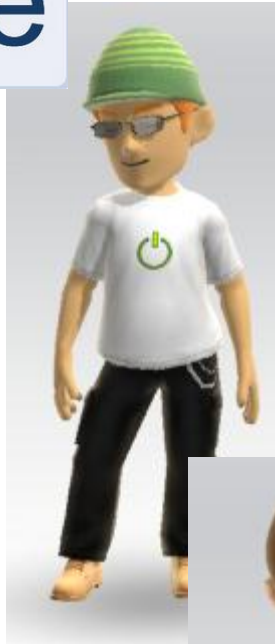
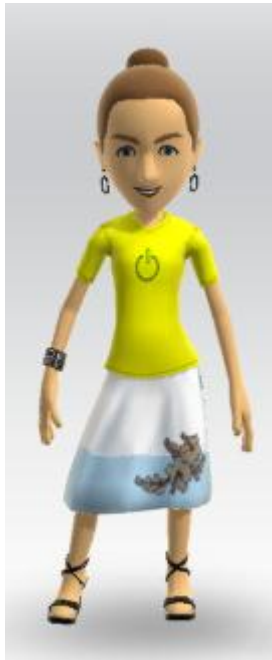


Bison Technology

- Split of Business and Hard Core Platform Development
- Benefits independent life cycles
- Continuous evolution
- Happy roles less costs
- Faster because less iterations
- Guaranteed release capability and head ache free deployment
- Rock Solid, scalable and great performance



***Main Vision Great Solutions, Reference Customer
and Happy Development Employees***



Dream?

- **Reality!** @Bison 14 Scrum Teams ~ 160 developers
 - ✓ 11 Teams Business oriented "Bison Process"
 - ✓ 3 Teams Framework related "Bison Technology"
- Java classes (Bison Technology Classes 18216 and lines of code 604786) and (Bison Process Classes 8278 and lines of code 464588), 21 reference models, 9041 workflows, 4177 GUI's, 158'590 CmpDeps Meta Components, 1141 DB Entities...
- Business Software Bison Process for Agrarian, Steel, Whole Sales and Retail
- Bison Technology for any Business Software Branches
- Locations CH, D, RU
- Employees 650

www.bison-group.com





Bison Technology

Copyright Bison Schweiz AG

***Business Software
für Unternehmens-
prozesse***